



---

# **141<sup>st</sup> Sailing Season**

## **OFF THE BEACH**

06/09/2025  
Thru to  
28/03/2025

# **NOTICE OF RACE**

## **(NoR)**

ORGANISING AUTHORITY

**ROYAL QUEENSLAND YACHT SQUADRON LTD**  
578 Royal Esplanade, Manly, QLD 4179

*The notation '[NP]' in a rule of the sailing instructions (SIs) means that a boat may not protest another boat for breaking that rule. This changes RRS 60.1.*

*The notation '[DP]' in a rule of the sailing instructions (SI's) means that a protest committee can award a penalty less than disqualification (including no penalty) at their discretion. This changes Rules 60.5 and 64.*

*The notation '[SP]' in a rule of the NoR and/or SIs means that a standard penalty may be applied by the race committee without a hearing per RRS60.5(b)(3).*

## **1. RULES**

- 1.1 The event is governed by the rules as defined in The Racing Rules of Sailing (RRS).
- 1.2 RRS Appendix B will apply to all windsurfing classes.
- 1.3 The applicable class rules will apply.
  - 1.3.1 [DP][NP] Sailors in the Nacra 15 class shall wear a suitable helmet at all times while racing.
- 1.4 The Australian Sailing (AS) prescriptions and Special Regulations Part 2 will apply (See Attachment C).
- 1.5 For Etchell Class Boat NoR 1.4 is amended to "AS Special Regulations Part 1 Category 7 shall apply".
- 1.6 RRS Appendix A5.3 will apply.
- 1.7 RRS Appendix T – Arbitration will apply.
- 1.8 RRS Appendix P may be applied at any time at the discretion of the Race Committee.
- 1.9 RRS 90.3(e) (Time Limit for changes to race scores) shall apply.
- 1.10 [DP][NP] Competitors shall comply with the traffic management provisions of the marine event permits that apply with respect to entering and exiting the harbour and not causing hinderance to any vessel.

## **2. CODE OF CONDUCT**

- 2.1 [DP] Competitors and support persons shall comply with reasonable requests from race officials.
- 2.2 [DP] Competitors and support persons shall handle any equipment or place advertising provided by the organizing authority with care, seamanship, in accordance with any instructions for its use and without interfering with its functionality.
- 2.3 Competitors must follow RQYS Club Policies (<https://www.rqys.com.au/membership/rules-and-regulations/> )

## **3. CHANGES TO RACE DOCUMENTS & SCHEDULE**

- 3.1 Any change to the race documents will be posted before 0900 on the day it will take effect, except that any change to the schedule of races will be posted by 2000 on the day before it will take effect.

## **4. SAILING INSTRUCTIONS**

- 4.1 The Sailing Instructions will be available after 1400 hrs on 03/09/2025 at <https://www.rqys.com.au/141st-sailing-season-otb-club-racing/>

## **5. COMMUNICATION**

- 5.1 The online official notice board is located at <https://www.rqys.com.au/141st-sailing-season-otb-club-racing/>.
- 5.2 Secondary to the Official noticeboard "instant messaging" system WhatsApp may be used to notify skippers of timely information, confirmation of days course, Protest Time limit etc. the group can be joined at: <https://chat.whatsapp.com/Dlxhcv8kclKBLxoQTEstPg> .
- 5.3 The race office is located at The RQYS Sailing Office located adjacent to the Main Rigging Lawn, telephone 3396 8666, email [sailing@rqys.com.au](mailto:sailing@rqys.com.au) .
- 5.4 [DP] While racing, except in an emergency, a boat shall not make voice or data transmissions and shall not receive voice or data communication that is not available to all boats.
- 5.5 On the water, the race committee may make courtesy broadcasts to competitors on VHF radio. The channel will be 72 on Northern Course and 77 on Southern Course.

## **6. ELIGIBILITY AND ENTRY**

- 6.1 Seasons entry is open to dinghies, boards, OTB multihulls, Etchells & VX One's.
- 6.2 Seasons entrants will be entered in the Seasons Points series, as well as the Squadron Championships.
- 6.3 Classes with less than 5 entries will be entered into a mixed class division.
- 6.4 Skippers with seasons entries are required to be financial members of the Royal Queensland Yacht Squadron as a Crew or Full Member (or equivalent).
- 6.5 Casual Entries can be lodged in advance online via the regatta page or can be lodged on the day of racing before the first warning signal of the day, by seeing the Sailing Office staff adjacent to the Main Rigging Lawn.
- 6.6 Casual entrants are required to be a member of Australian Sailing by having a club membership with a yacht or sailing club, or by obtaining an RQYS Sail Pass. See [the online policy](#) for further rules regarding Sail Pass.
- 6.7 Boats may enter the event by registering online thru the regatta page at <https://www.rqys.com.au/141st-sailing-season-otb-club-racing/>.
- 6.8 To be considered an entry in the event, a boat shall complete all registration requirements and pay all fees.
- 6.9 Late entries may be accepted at the discretion of the Organising Authority.
- 6.10 All persons on board a boat while racing shall be members of a Club affiliated to Australian Sailing and have an Australian Sailing number, or hold a valid Sail Pass, or if an international competitor, be a member of club affiliated to a World Sailing recognised Member National Authority.
- 6.11 Class course allocations shall be as follows:
  - 6.11.1 Northern Course**
    - 29er
    - 49er
    - Etchells
    - Finns
    - Hobie 16
    - Mixed Catamarans
    - Nacra 15
    - OK Dinghy
    - Skiffs
    - VX One
  - 6.11.2 Southern Course**
    - Flying 11
    - ILCA 4
    - ILCA 6
    - ILCA 7
    - Optimist
    - Raceboard
    - RS Feva
    - RS 200
    - Windsurfer LT
- 6.12 Classes may be modified or combined based on number of entries (as per NoR 6.3) and/or at the discretion of the race committee.
- 6.13 Class course allocations may be modified based on number of entries and/or at the discretion of the race committee.

## 7. FEES

- 7.1 RQYS Member Season Entry Fees:
- |       |                                     |          |
|-------|-------------------------------------|----------|
| 7.1.1 | Single Handed Off the Beach Classes | \$330.00 |
| 7.1.2 | Double Handed Off the Beach Classes | \$385.00 |
| 7.1.3 | VX One and Etchells                 | \$385.00 |
- 7.2 Casual Entry Fees:
- |       |              |         |
|-------|--------------|---------|
| 7.2.1 | RQYS Members | \$30.00 |
| 7.2.2 | Non-Members  | \$45.00 |
- 7.3 RQYS members with club racing included as part of their Dinghy Storage agreement must contact the RQYS Sailing Office directly at [sailing@rqys.com.au](mailto:sailing@rqys.com.au) if their entry is missing or contains errors.
- 7.4 Any Refunds will be as per the RQYS Sailing Refunds Policies (<https://www.rqys.com.au/membership/rules-and-regulations/>).

## 8. SCHEDULE

- 8.1 Opening Day of the 141<sup>st</sup> Season (2025 – 2026) shall be on Saturday 30 August 2025.
- 8.2 **Opening Day Race on Saturday 30 August 2025** shall be run as a separate race to Seasons Points with a separate set of Sailing Instructions.
- 8.3 Racing will be conducted on Saturdays for Off the Beach classes as per the [Online Sailing Program](#).
- 8.4 Seasons Points races will be every race of the Season.
- 8.5 Squadron Championships races will be as per the [Online Sailing Program](#).

## 9. EQUIPMENT INSPECTION

- 9.1 Boats may be inspected at any time.

## 10. VENUE

- 10.1 NoR Attachment A shows the location of the racing areas.
- 10.2 NoR Attachment D shows the plan of the event venue.

## 11. COURSES

- 11.1 The courses to be sailed will be as described in the Sailing Instructions

## 12. PENALTY SYSTEM

- 12.1 For the Skiffs, 9ers and Multihull classes RRS 44.1 is changed so that the Two-Turns Penalty is replaced by a One-Turn Penalty.
- 12.2 For Etchells and VX One, RRS44.1 is amended in that the penalty for breaking a rule of RRS Part 2 shall be a One-Turn Penalty, except the penalty for breaking a rule of RRS Part 2 occurring within the zone as defined in RRS shall be a Two-Turn Penalty.

### **13. SCORING**

- 13.1 There shall be three scoring methods: Season Points Series Scratch, Season Points Series PHS & Squadron Championship Series Scratch (Per NoR 8.5).
- 13.1.1 Any mixed divisions Scratch shall be replaced with Yardstick.
- 13.2 1 race is required to constitute a series.
- 13.3 Score discards shall be as per the following:
- 13.3.1 For Squadron Championship series, there will be 1 discard per 5 completed races.
- 13.3.2 For Seasons Points series, there will be 1 discard per 5 completed races.
- 13.4 PHS Handicaps shall be defined by the "SailSys" system. SailSys is an online race management system. For further information regarding handicaps and scoring see <https://www.sailsys.com.au> .
- 13.5 Average Points:
- 13.5.1 Average points may be requested for season entries when racing is missed due to competing at a National or International class regatta or a World Sailing ranked event in the competitor's class, or in any other circumstance approved by the Sailing Committee.
- 13.5.2 These points shall be awarded for no more than four (4) days in a season.
- 13.5.3 To receive average points, sailors must request average points in advance by emailing [sailing@rqys.com.au](mailto:sailing@rqys.com.au) with a "Request for Average Points" form and have this approved by the Sailing Office BEFORE the missed day's racing.
- 13.5.4 Average Points will be awarded as per RRS A9 (a).
- 13.6 A boat which Does Not Compete (DNC) in a race shall be scored the number competitors within the fleet at the starting area, plus an additional three (3) points. This changes RRS A5.3.

### **14. CHARTERED OR LOANED BOATS**

- 14.1 A chartered or loaned boat may carry national letters or a sail number in contravention of her class rules, provided that the race committee has approved her sail identification before the first race.

### **15. BERTHING**

- 15.1 Restrictions may be placed on where vessels may be stored or rigged by the RQYS Sailing or Marina office.
- 15.2 Boats may only be stored on the RQYS rigging lawn for the duration of the regatta & 24hrs before/after the regatta, unless otherwise approved by the OA.
- 15.3 No tie down restraints may penetrate the ground deeper than 300mm due to lawn irrigation systems.

### **16. DATA PROTECTION**

- 16.1 By participating in an event, a competitor automatically grants to the Organising Authority and the sponsors of the event, the right in perpetuity, to make, use and show, from time to time and at their discretion, any motion pictures, still pictures and live, taped or film television and other reproductions of him/her during the period of the competition for said event in which the competitor participated and in all material related to the said event without compensation.

## 17. RISK STATEMENT

- 17.1 RRS 3 states: 'The responsibility for a boat's decision to participate in a race or to continue to race is hers alone.' By participating in this event each competitor agrees and acknowledges that sailing is a potentially dangerous activity with inherent risks. These risks include strong winds and rough seas, sudden changes in weather, failure of equipment, boat handling errors, poor seamanship by other boats, loss of balance on an unstable platform and fatigue resulting in increased risk of injury. **Inherent in the sport of sailing is the risk of permanent, catastrophic injury or death by drowning, trauma, hypothermia or other causes.**
- 17.2 All participants are required to comply with any safety provisions as mandated under the Racing Rules of Sailing, the Australian Sailing Special Regulations Part 2 for Off The Beach Boats, Part 1 Category 7 for Etchells, and any Class Rules that may apply. The Squadron encourages and supports competitors who believe it is appropriate to exceed the above requirements (such as the wearing of helmets, body armour, impact vests, etc.) if they or their guardian believe that conditions and their personal circumstances warrant. All skippers and crew (in particular in higher performance trapezing classes and those with trampoline decks) are strongly encouraged to carry on-person safety knives and / or webbing cutters to assist in entrapment prevention. All crew wearing trapeze harnesses must ensure that they do not impede the ability to remove their harnesses through the wearing of clothing or other equipment that prevents them doing so. All competitor's attention is drawn to the Risk Statement - Section 17.1 of the Notice of Race.

## 18. INSURANCE

- 18.1 Each participating boat shall be insured with valid third-party liability insurance with a minimum cover of \$10,000,000AUD per incident or the equivalent.

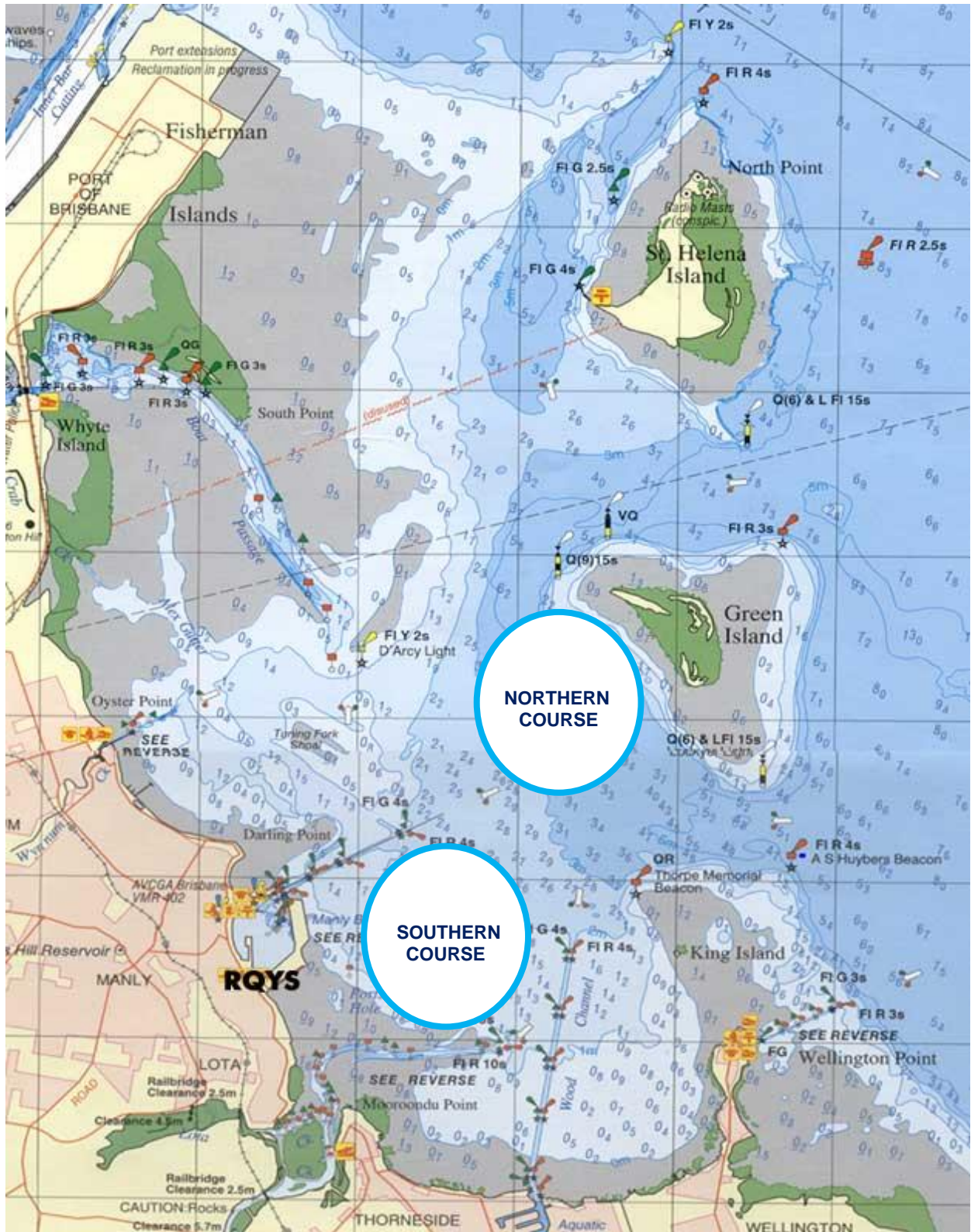
## 19. PRIZES

- 19.1 The 2025/2026 Presentations of Trophies for Seasons Points and Squadron Championships and other events will take place in a Squadron Function Room, to be advised by invitation in future. A list of major trophies is at NoR Attachment B.
- 19.2 Only Season Entrants are eligible for Seasons Points or Squadron Championship awards at the Junior and/or Senior Presentation of Trophies.
- 19.3 Divisions or Classes with five or more entries will be awarded:
- 19.3.1 1<sup>st</sup>, 2<sup>nd</sup> & 3<sup>rd</sup> Season Points Scratch (Yardstick for Mixed Divisions).
  - 19.3.2 1<sup>st</sup>, 2<sup>nd</sup> & 3<sup>rd</sup> Season Points PHS.
  - 19.3.3 1<sup>st</sup>, 2<sup>nd</sup> & 3<sup>rd</sup> Squadron Championship Scratch (Yardstick for Mixed Divisions).
- 19.4 Other prizes may be awarded at the discretion of the Organising Authority.

## 20. FURTHER INFORMATION

- 20.1 For further information please contact:  
RQYS Sailing: 07 3396 8666 / [sailing@rqys.com.au](mailto:sailing@rqys.com.au)  
578 Royal Esplanade MANLY QLD 4179 AUS  
[www.rqys.com.au](http://www.rqys.com.au)

# Attachment A – Approximate Racing Area



# Attachment B

**Most Consistent Skipper in a Junior Class**

~ Harold Dean Memorial Trophy ~

**Best Result at a National Regatta**

~ Vidgen Perpetual Trophy ~

**Most Improved Junior Skipper**

~ T E Passey Trophy ~

**Junior Sailor of the Year**

~ Lady Stonehaven Challenge Cup ~

**Youth Sailor of the Year**

~ W A O'Hare Memorial Trophy ~

**Squadron Champion for an Olympic Class**

~ Astra Trophy ~

**Longest Serving Member of a Season Points Winner**

~ The Governor's Trophy ~

**Most Consistent Skipper in a Senior Class**

~ Callisto Cup – AM Greenfield Trophy ~

**Most Consistent Contributor**

~ Maurice Tilley Perpetual Trophy ~

**Corinthian Yachtsman of the Year**

~ Model Elliott ~

**Best Performing Female Crew**

~ Erica Blumson Trophy ~

**Best Performance in an Olympic Class**

~ John H Robinson Memorial Trophy ~

**Leading Forward Hand**

~ Past Commodore Greg Clarke Trophy ~

**Keelboat Crew of the Year**

~ E Sparkes Trophy ~

**Sailor of the Year**

~ Hardy Brothers Jewellers Trophy ~

# Attachment C

## SAFETY FIRST

As part of a national incentive by Australian Sailing, RQYS has adopted 'Whole of Fleet' Safety Audits appropriate to your race category.

### ***So why extend equipment audits to all of our fleet?***

The simple answer is compliance and good safety practice within the club. We have a Duty of Care to those participating in RQYS events and this extends beyond RQYS responsibility to boat owners and skippers.

Nationally, self audits have not, in the majority of cases, been completed to a satisfactory standard and it is our intention to engender into our sailors a culture of safety which benefits us all.

Chris Morgan, a division yacht owner and Queensland's Senior Sailing Australia Equipment Safety Auditor, has agreed to undertake the management of this program alongside the sailing office.

- All yacht owners and off the beach boats will be required to complete the appropriate Sailing Australia category form applicable to the club racing they intend to enter. [Off the Beach Audit](#) (most recent version at May 2024)  
[AS SR Safety Equipment Checklists](#)
- Owners will then be required to contact an RQYS/Class approved auditor(s) to arrange an inspection and sign off.

It is not our intention to be heavy handed and disqualify boats that do not have an audited form on race day, but we want all participants to build a culture of safety in the club from the juniors up.

Below is a list of current RQYS auditors. Please arrange for an audit check well in advance of commencing racing as auditors may not be available on the day. If you are interested in becoming an auditor, please contact Mark Dingley ([sailingmanager@rqys.com.au](mailto:sailingmanager@rqys.com.au)).

<b>RQYS / Class Safety Auditors for Off the Beach Boats</b>			
<b>ILCA</b>	Greg Kemp Jan Kemp George Meikle	<b>VX One</b>	Greg Kemp Jan Kemp
<b>Optimist</b>	Greg Kemp Jan Kemp Mick Patrick	<b>Finn</b>	Stuart Watson Craig Padman
<b>RS Dinghy</b>	Simon Tribe	<b>Windsurfing</b>	Scott Luxton
<b>Multihull</b>	Colin Bilston Andrew Warneke Chris Davey	<b>9er</b>	Simon Albrey Mick Patrick

# Attachment D – Location Information

## EMERGENCY CONTACTS

---

Emergencies	000	
RQYS Sailing Manager	0424 101 732	
Royal Queensland Yacht Squadron	(07) 3396 8666	578 Royal Esplanade, Manly QLD
Manly Coast Guard	(07) 3396 5911	40 Trafalgar St, Manly QLD
Wynnum Police	(07) 3308 8100	82 Pine St, Wynnum QLD
Wynnum Fire & Rescue	(07) 3396 3297	2006 Wynnum Rd, Wynnum West
Brisbane Water Police	(07) 3895 0333	2 Howard Smith Dr, Port of Brisbane

### Location, access & communication of Next of Kin Details

Sailing Office & SailSys Databases including information gathered from regatta registrations and/or indemnity forms.

### Location of Nearest Emergency Medical Facilities

Redlands Hospital	(07) 3488 3111	21 Weippin St, Cleveland QLD
-------------------	----------------	------------------------------

### Location of Nearest Medical Facilities

Wynnum Family Health Service	(07) 3893 0093	116 Edith St, Wynnum QLD
Doctors on Manly Road	(07) 3348 6111	12 Manly Rd, Manly QLD
Silky Oaks Medical Practice	(07) 3396 9855	218 Manly Rd, Manly QLD
Dental On Cambridge	(07) 3348 6661	4/99 Cambridge Parade, Manly QLD

## LOCAL SERVICES

### Sail Maker

#### North Sails

1/264 Tingal Rd, Wynnum QLD  
3396 5822

#### Hood Sails

181 Wynnum Esplanade, Wynnum QLD  
0419 799 958

#### Ullman Sails

112 Glenora St, Wynnum QLD  
(07) 3348 7245

### Chandlery

#### Muir Marine

453 Esplanade, Manly QLD  
(07) 3396 9988

#### Road Tech Marine

20 Redland Bay Rd, Capalaba QLD  
(07) 3914 9543

### Boat Building / Repairs – Located at RQYS

#### JSA Marine

(07) 3348 5682

#### David Glenn Boat Building

0412 878 144

### Physio

#### Manly Physiotherapy & Pilates

3/443 Esplanade, Manly QLD  
(07) 3396 8137

#### Bounce Physio Birkdale

190 Birkdale Rd, Birkdale QLD  
(07) 3822 2122

### Pharmacy

#### Manly Village Pharmacy

9/222 Stratton Terrace, Manly QLD  
(07) 3396 8999

### Groceries

#### IGA Manly Village

Cnr Stratton Tce & Cambridge Parade  
(07) 3396 1980

#### Woolworths Wynnum Central

145 Florence St, Wynnum QLD  
(07) 3513 4416

### Butcher

#### The Local Butcher

222 Stratton Terrace, Manly QLD  
(07) 3396 2195

### Bakery

#### Manly Bakery

222 Stratton Terrace, Manly QLD  
(07) 3396 5688

### Accommodation

#### [Manly Marine Cover Motel](#)

Located on the Grounds of RQYS  
(07) 3348 1000

#### Limited Camping Facilities at RQYS

[Limited camping MAY be available](#)  
(07) 3396 8666

#### [The Manly Hotel](#)

54 Cambridge Parade, Manly QLD  
(07) 3249 5999

#### [Waterloo Bay Hotel](#)

75 Berrima St, Wynnum QLD  
(07) 3893 2344

#### [Pelican's Nestle Inn](#)

149 Wynnum Esplanade, Wynnum QLD  
(07) 3396 3214

#### [Wynnum Anchor Motel](#)

14 Adam St, Wynnum QLD  
(07) 3396 3037

## LOCAL WEATHER TIDE

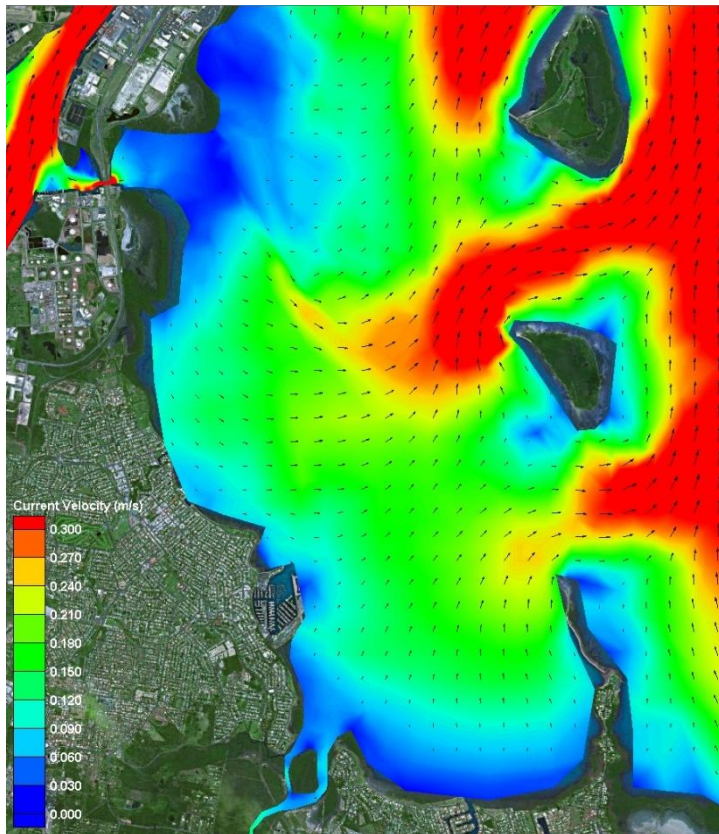
Local Weather: The RQYS Weather Station can be found at:  
<https://www.rqys.com.au/weather-station/>  
The Weather Station records from above the club Bay Lookout.

BOM: Radar: <http://www.bom.gov.au/products/IDR663.loop.shtml>  
Marine Forecast:  
<http://www.bom.gov.au/qld/forecasts/moreton-bay.shtml>

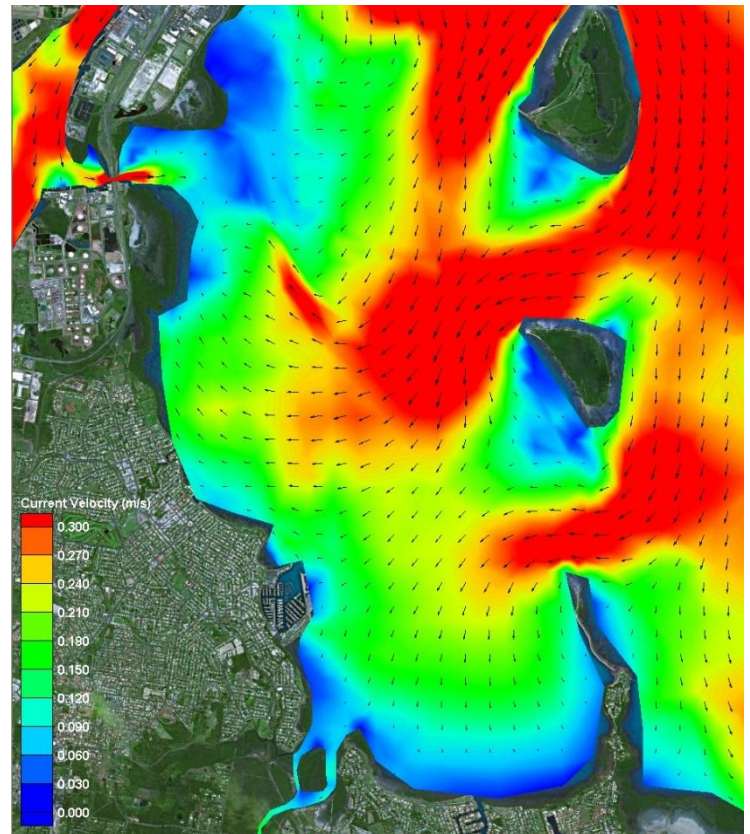
Other Popular forecasts:

Predict Wind: <https://forecast.predictwind.com/table/>  
Seabreeze: <https://www.seabreeze.com.au/weather/wind-forecast/brisbane>  
WillyWeather: <https://wind.willyweather.com.au/qld/brisbane/brisbane.html>

### Waterloo Bay Ebb



### Waterloo Bay Flood



LOCALITY		MAP GRID
578 Royal Esplanade access		A6
Eastern Beach (windsurfing)		P7-P8
Davenport Drive dog off-lead area		N10-P7
Inspiration Point lookout (fishing)		M10
Public (Harbour South) Carpark		A4
Public (South) Boatramp		B4
Public (South) Pontoon		C3

BUILDINGS		MAP GRID
Australian Sailing (QLD)		C8
Bayview Lookout		P6
Boatyard [Former Marina] Office		H5
Cavill Building / FLAGS Room		C5
Clubhouse		C6
Manly Marina Cove Motel (MMCM)		A7 / B8
Marina Office		F5
Monument		K6
Sailing Academy		B5
Sailing Office		D6
Sheds / Storage Lockers		K6, J7- L7
Sports Amenities Block		F5
Trades / Services Sheds		H7
Volunteers' Sheds		D8, J5
Windsurfing Centre of Excellence		P6
Youth Squad Shed		F7

GROUNDS		MAP GRID
A Academy (Tackers) Rigging Lawn		B5
DOSA (designated smoking) areas		A6, A7
Kids' / dinghy beach		N5
1 Rigging Lawn 1 (Main / Functions)		D5
2 Rigging Lawn 2 (Marina Office)		F6
3 Rigging Lawn 3 (Youth Squad)		F7
4 Rigging Lawn 4 (Eastern grounds)		L6, M6
Regatta camping area		M7
Regatta trailer parking area		L6
Slipway 2 (Longer-term storage)		J7-L7
Windsurfing - rigging / hosedown		N7, P6

FACILITIES		MAP GRID
Dock - Bill Kirby (VIP: booking only)		D4
Dock - Fit-out work (short-term)		H4
Dock - Fuel (Diesel & PULP)		D4-E4
Fuel - Bowser (shoreside)		D5
HAZMAT Disposals shed		H5
Ramp 1 - Academy (Tackers)		C4
Ramp 2 - Main (Launch / retrieval)		E5
Ramp 3 - Slipway (Boatyard)		G5
Ramp 4 - Dinghy (Kids' beach)		N5
RQYS Boatyard		G5/6-H5/6
RQYS Sheds / Storage Lockers		K6 / J7-L7
Slipway 2 (longer-term storage)		J7-L7
Travelift (35t) & Slewing Crane		H4/H5

AMENITIES		MAP GRID
BBQs		B4, P6
Beach (RQYS - dinghy / kids')		N5
Beach (windsurfing, dogs, etc)		N10-P7
Gym		F5
Hosedown stations (boats, trailers, vehicles)		E7, F6, K7, M5
Hosedowns (personal / gear)		N7, P6
Kids' play areas		B4, N5
Laundry facilities		H5, P6
Seating / picnic areas		D5, G7, H6, N5, P6
Showers (bathrooms)		F6, H5, P6
Showers (outdoors)		F6, N7
Toilets		C5, C6, F6, H5, H7, P6

BUSINESSES		MAP GRID
Andrew Woodforth Marine		H7
Brisbane Scuba		H7
CMA Mechanical & Marine		K6
David Glenn Boat Builders		H7
Electech Industries		H7
Green Marine Electrical		K6
JSA Marine		H7
Ocean Logic		J7
Paper Sailors Rock		H7
Professional Boat Care		H7
Qld Marine Training Services		B5
Seadog Marine		H7
Signature Yacht Services		L7
SigTech Electrical		L7
World Wide Boat Brokers		B6
Yachtshare		H5

**NEARBY MANLY HARBOUR VILLAGE SERVICES**  
 900m / 5-15min

**CONVENIENT RQYS & BAYSIDE MANLY ACCESS**  
 Manly Station: 1.5km  
 Brisbane CBD: 30min  
 20min drive

# RQYS DIRECTORY

Note: fishing, crabbing, netting or swimming is not permitted from RQYS grounds or on any RQYS marina jetties and pontoons.

Queensland Government Regulations prohibit fishing, crabbing, netting and anchoring within Manly Boat Harbour.



PARKING		MAP GRID
MMCMotel patrons only		B7
Public (Harbour South) boatramp		A4
RQYS Members / Flag Officers only		B6
RQYS visitors		C7-C8
Inside gates: RQYS Members & authorised only		
RQYS Members - A/B row only		F5
RQYS Members - car-trailer (temp.)		F8

RESOURCES		MAP GRID
AEDs (Defibrillators)		C6, F5, P6
First Aid kits		B7, C6, E8, F5, H5
Bins / recycling, etc - see latest version of separate map A0_RQYS_BRC		
Safety / emergency equipment - see latest version of separate map A0_RQYS_SEF		

STORAGE		MAP GRID
Dinghies		D7/8, H8
Etchells		G6-G7
Kayaks		M5
RQYS Sheds / Storage Lockers		K6 / J7>L7
Slipway 2 (larger / longer-term)		J7>L7
Trailer parking bays: see details on map above		

# ROYAL QUEENSLAND YACHT SQUADRON – THE SAILING GATEWAY TO MORETON BAY

Gold Coast

75km

Brisbane CBD

Sunshine Coast

100km



Waterloo Bay



~ Founded 1885 ~

[rqys.com.au](http://rqys.com.au)

[/RQYS.Manly](https://www.facebook.com/RQYS.Manly) [/royal\\_qld\\_yacht\\_squadron](https://www.instagram.com/royal_qld_yacht_squadron)

