



SAIL BRISBANE

**Incorporating WingFoil QLD State
Championships**

16th – 20th December 2025

NOTICE OF RACE (NoR)

ORGANISING AUTHORITY

ROYAL QUEENSLAND YACHT SQUADRON LTD
578 Royal Esplanade, Manly 4179, QLD, Australia

IN CONJUNCTION WITH AUSTRALIAN SAILING LTD

The notation '[NP]' in a rule of the sailing instructions (SIs) means that a boat may not protest another boat for breaking that rule. This changes RRS 60.1.

The notation '[DP]' in a rule of the Notice of Race (NOR) and Sailing Instructions (SI's) means that a protest committee can award a penalty less than disqualification (including no penalty) at their discretion. This changes RRS 60.5 and RRS 64.

The notation '[SP]' in a rule of the NoR and/or SIs means that a standard penalty may be applied by the race committee without a hearing per RRS 60.5(b)(3).

1. RULES

- 1.1 The event is governed by the rules as defined in The Racing Rules of Sailing (RRS).
- 1.2 The Australian Sailing prescriptions and special regulations Part 2 for off the beach boats applies
- 1.3 The relevant Class Rules will apply.
- 1.4 Introductory Rules of Racing apply to Green Fleet sailors (See NoR Attachment D)
- 1.5 RRS Appendix T – Arbitration will apply.
- 1.6 RRS Appendix P (as amended in Sailing Instructions) Special Procedures for RRS 42 will apply.
- 1.7 RRS Appendix B – Windsurfing Fleet Racing Rules will apply.
- 1.8 RRS Appendix WF – Wing foiling racing rules will apply.
 - 1.8 (a) Wind, Wing & IQFoil crew shall wear a helmet to the minimum standard EN1385, EN1077, EN 966, ASTM 2040, Snell S98 or equivalent, with a brightly coloured region of at least 300 square centimetres of the exterior surface that can be seen from above the water with crew lying face down or face up.
 - 1.8 (b) Wind Foil crew shall wear an impact vest which comply with the minimum standard ISO 12402-5, or USCG Type III, or AS 4758 Level 50 or equivalent, and shall be used at all times. An impact vest is a garment worn on the torso which is specifically designed to protect the wearer around the torso from impact.
- 1.9 [NP] Attention is drawn to class rules mandating the use of helmets for Catamarans (conforms to EN1385 or EN1077) for both helm and crew when afloat.
- 1.10 Sailors participating in the WingFoil QLD State Championships must be a financial member of the Australian WingFoil Racing Class Association.

2. CODE OF CONDUCT

- 2.1 [DP] Competitors and support persons shall comply with reasonable requests from race officials.
- 2.2 [DP] Competitors and support persons shall handle any equipment or place advertising provided by the organizing authority with care, seamanship, in accordance with any instructions for its use and without interfering with its functionality.
- 2.3 Competitors must follow RQYS Club Policies (<https://www.rqys.com.au/membership/rules-and-regulations/>)

3. CHANGES TO RACE DOCUMENTS & SCHEDULE

- 3.1 Any change to the race documents will be posted before 0900hrs on the day it will take effect, except that any change to the schedule of races will be posted by 2000hrs on the day before it will take effect.

4. SAILING INSTRUCTIONS

- 4.1 The sailing instructions will be available after 1200hrs on 11/12/2025 at <https://www.rqys.com.au/event/sail-brisbane-2025/>.



5. COMMUNICATION

- 5.1 The official notice board (ONB) is located at <https://www.rqys.com.au/event/sail-brisbane-2025/>.
- 5.2 Secondary to the Official noticeboard “instant messaging” system WhatsApp may be used to notify skippers of timely information, Protest Time limit etc. The group can be joined at <https://chat.whatsapp.com/FvLHrEcjswPLFckBnENq9b>
- 5.3 The race office is located at The RQYS Sailing Office located adjacent to the Main Rigging Lawn, telephone 3396 8666, email sailingadmin@rqys.com.au .
- 5.4 [DP] While racing, except in an emergency, a boat shall not make voice or data transmissions and shall not receive voice or data communication that is not available to all boats.

6. ELIGIBILITY AND ENTRY

- 6.1 The regatta is open to all World Sailing recognized senior and youth classes as well as nationally recognized classes approved by the Organising Authority.
- 6.2 All competitors shall be a current member of a club affiliated with Australian Sailing or a World Sailing Member National Authority (MNA). Proof of this must be submitted with entry.
- 6.3 A division shall be constituted once five (5) entries are received. The Organising Authority may elect to run a mixed class division based on the suitability of the entries.
- 6.4 Course allocations are as follows (if your class is not listed, please contact the Sailing Office):

Alpha Course	29er 49er 49er FX Women/Open International 420 International 470 Mixed International Finn International OK Nacra 15 Nacra 17 Hobie 16
Bravo Course	ILCA 4 ILCA 6 Women ILCA 6 Open ILCA 7 RS 200 Tasar
Charlie Course	Optimist Intermediate and Open O’pen Skiff Sabot (1 or 2 Up) Flying Eleven RS Feva
Delta Course	iQFoil – Open Men 8m iQFoil – Open Women 7.3m iQFoil – Youth U19 Men 8m iQFoil – Youth U19 Women 7.3m U17 Windfoil 7.3m max WingFoil
Echo Course	Optimist Green

- 6.5 Boats may enter the event by registering online at:
Alpha Course: <https://app.sailsys.com.au/club/25/entry/series/5049/pricing>
Bravo Course: <https://app.sailsys.com.au/club/25/entry/series/5050/pricing>
Charlie Course: <https://app.sailsys.com.au/club/25/entry/series/5051/pricing>
Delta Course: <https://app.sailsys.com.au/club/25/entry/series/5052/pricing>
Echo Course: <https://app.sailsys.com.au/club/25/entry/series/5166/pricing>
- 6.5 (a) To be considered an entry in the event, a boat shall complete all registration requirements and pay all fees.
- 6.6 Late entries may be accepted at the discretion of the Organising Authority.

7. FEES

- 7.1 Entry fees are as detailed in NoR Attachment A.
- 7.2 Entry nominated after 09/12/2025 shall pay the standard entry fee plus a \$100.00 late fee.
- 7.3 Any Refunds will be as per the RQYS Sailing Refunds Policies (<https://www.rqys.com.au/membership/rules-and-regulations/>).

8. ADVERTISING

- 8.1 Boats may be required to display advertising chosen and supplied by the organizing authority.

9. INDICATIVE SCHEDULE

- 9.1 The Sailing Instructions schedule shall take precedence.
- 9.2 The Indicative Schedule is detailed in NoR Attachment A.
- 9.3 On each day of racing excluding the last day, tentatively no warning signal will be made after 1500hrs, races may be started later in the interest of a fair, complete regatta.

10. EQUIPMENT INSPECTION

- 10.1 Each boat shall hold a valid measurement certificate as per their class rules.
- 10.2 Boats may be inspected at any time.

11. VENUE

- 11.1 NoR Attachment B shows the location of the racing areas.
- 11.2 NoR Attachment C shows local information and plans of the event venue.

12. COURSES

- 12.1 The courses to be sailed shall be as described in the Sailing Instructions.

13. PENALTY SYSTEM

- 13.1 RRS Appendix P, Special Procedures for Rule 42, will apply as modified. RRS P2.3 will not apply and RRS P2.2 is changed so that it will apply to any penalty after the first one.
- 13.2 For the Foiling Boards, 49er, 49er FX, 29er, Nacra 17, Nacra 15, and all other catamaran classes, RRS 44.1 and RRS P2.1 are changed so that the Two-Turns penalty is replaced by a One-Turn penalty.
- 13.3 The intention is to appoint a National Jury as provided in RRS Addendum A.
 - 13.4 The right to appeal from a Protest Committee decision is denied as provided in RRS under Australian Sailing's Policy on denial of the right of appeal (RRS Addendum A Part 2).

14. SCORING

- 14.1 NoR Attachment A states the maximum number of races for each division.
- 14.2 For all courses other than Delta. Three (3) races are required to be completed to constitute a series, When fewer than four (4) races have been completed, a boat's series score will be the total of her race scores.
- 14.2 (a) When from four (4) to seven (7) races have been completed, a boat's series score will be the total of her race scores excluding her worst score.
- 14.2 (b) When from eight (8) to eleven (11) races have been completed, a boat's series score will be the total of her race scores excluding her 2 worst scores.
- 14.2 (c) When twelve (12) races have been completed, a boat's series score will be the total of her race scores excluding her 3 worst scores.
- 14.3 For Delta Course. Three (3) races are required to be completed to constitute a series, When fewer than ten (10) races have been completed, a boat's series score will be the total of her race scores.
- 14.3 (a) When from ten (10) to fourteen (14) races have been completed, a boat's series score will be the total of her race scores excluding her worst score.
- 14.3 (b) When from fifteen (15) to nineteen (19) races have been completed, a boat's series score will be the total of her race scores excluding her 2 worst scores.
- 14.3 (c) When from twenty (20) to twenty-five (25) races have been completed, a boat's series score will be the total of her race scores excluding her 3 worst scores.

Pre-Regatta Coaching Clinic

We are excited to announce the Sail Brisbane Pre Regatta Coaching Clinic 2025!

Get in a solid 2 days of Coaching with our amazing Queensland Coaches before competing in Sail Brisbane!



Register for the Clinic using the QRCode or at

RQYS.com.au/SBClinic



15. SUPPORT PERSON VESSELS

- 15.1 All external powerboats coaching/supporting competitors for this event shall register with the Organising Authority, the RQYS Sailing Office, prior to the commencement of racing. Registration entitles boats to a range of benefits including launching facilities, overnight berthing, refuelling facilities and access to racecourse outside of 50m of any competitor or mark between start signal and finish of last boat, except when asked to assist by the Race Committee.
- 15.2 Registration for Support boat can be done on the [online portal](#) OR at the RQYS Sailing Office during Registration. Boats that do not have an identifying sticker shall pay \$10.00 to receive an identifying sticker.
- 15.2 (a) URL: <https://www.revolutionise.com.au/rqys/events/301110>
- 15.2 (b) ID Stickers: <https://www.revolutionise.com.au/rqys/product/30940/>
- 15.3 Support and spectator boats that do not register will not be permitted to launch or retrieve from RQYS premises, or berth there overnight; the Organising Authority reserves the right to remove such vessels from their premises.
- 15.4 All support/coach boats must have capability of communicating on VHF channel 72, 77 and 16 for the duration of the regatta.
- 15.5 Support person vessels shall comply with local legislation, including the safety equipment to be carried. A copy of the regulations is available at [safety-equipment-for-powered-vessels](#)
- 15.6 Life jackets (minimum Level 50) must be worn by all persons onboard and Kill cords must be used by the driver when motor is operating.
- 15.7 At all times, the registered driver(s) of a support vessel shall comply with directions given by a Race Official. This includes assisting in rescue operations when instructed to do so. RRS 37 - When a Race Committee displays code flag "V" with one sound, all boats and official and support vessels shall monitor the Race Committee communication channel for search and rescue instructions.
- 15.8 All support person vessels shall keep at least 50m to leeward of the start line and its extensions between the preparatory signal and the start signal and more than 50 metres clear of any competing boat or mark of the course, between the start signal and the finish of the last boat, except when asked by the Race Committee to enter the course area or assist competitors.
- 15.9 Penalties may apply to competitors that are associated with a support vessel that breaches any of the above conditions.



16. CHARTERED OR LOANED BOATS

- 16.1 A chartered or loaned boat may carry national letters or a sail number in contravention of her class rules, provided that the race committee has approved her sail identification before the first race.

17. BERTHING

- 17.1 Restrictions may be placed on where vessels may be stored or rigged by the RQYS Sailing or Marina office. Further information such as lawn allocations and trailer parking shall be detailed in the Sailing Instructions.
- 17.2 Boats may only be stored on the RQYS rigging lawn for the duration of the regatta & 24hrs before/after the regatta, unless otherwise approved by the OA.
- 17.3 No tie down restraints may penetrate the ground deeper than 300mm due to lawn irrigation systems.

18. DATA PROTECTION

- 18.1 By participating in an event, a competitor automatically grants to the Organising Authority and the sponsors of the event, the right in perpetuity, to make, use and show, from time to time and at their discretion, any motion pictures, still pictures and live, taped or film television and other reproductions of him/her during the period of the competition for said event in which the competitor participated and in all material related to the said event without compensation.

19. RISK STATEMENT

- 19.1 RRS 3 states: 'The responsibility for a boat's decision to participate in a race or to continue to race is hers alone.' By participating in this event each competitor agrees and acknowledges that sailing is a potentially dangerous activity with inherent risks. These risks include strong winds and rough seas, sudden changes in weather, failure of equipment, boat handling errors, poor seamanship by other boats, loss of balance on an unstable platform and fatigue resulting in increased risk of injury. **Inherent in the sport of sailing is the risk of permanent, catastrophic injury or death by drowning, trauma, hypothermia or other causes.**
- 19.2 All participants are required to comply with any safety provisions as mandated under the Racing Rules of Sailing, the Australian Sailing Special Regulations Part 2 for Off The Beach Boats, and any Class Rules that may apply. The Squadron encourages and supports competitors who believe it is appropriate to exceed the above requirements (such as the wearing of helmets, body armour, impact vests, etc.) if they or their guardian believe that conditions and their personal circumstances warrant. All competitor's attention is drawn to the Risk Statement - Section 19.1 of the Notice of Race.

20. INSURANCE

- 20.1 Each participating boat shall be insured with valid third-party liability insurance with a minimum cover of \$10,000,000AUD per incident or the equivalent.

21. PRIZES

- 21.1 Prizes will be awarded to 1st, 2nd and 3rd in each division as defined by SI 6.3.
- 21.2 Junior fleets may be awarded prizes for 1st, 2nd & 3rd Male / Female Skipper.
- 21.3 Other prizes may be awarded at the discretion of the Organising Authority

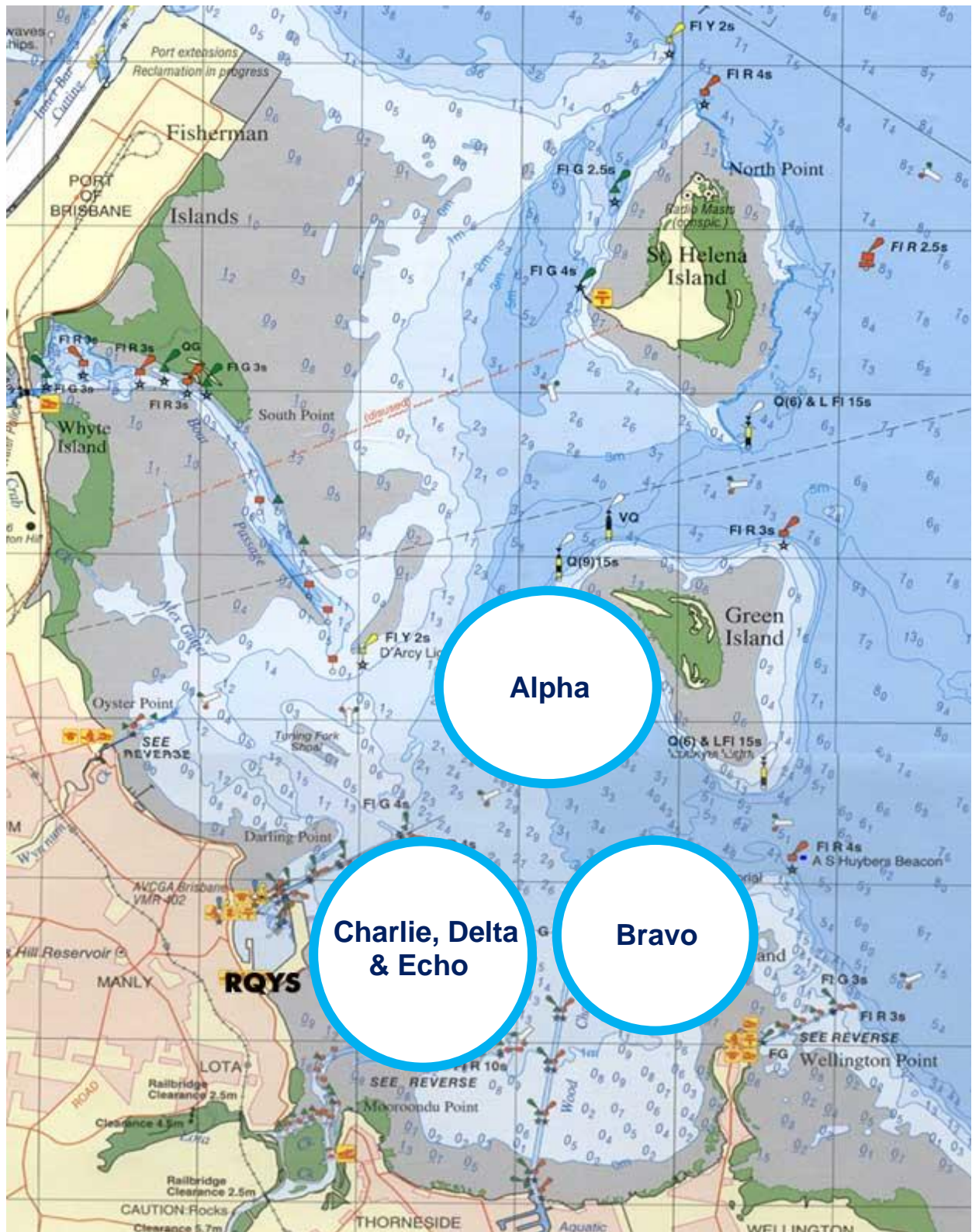
22. FURTHER INFORMATION

- 22.1 For further information please contact:
RQYS Sailing: 07 3396 8666 / sailingadmin@rqys.com.au
578 Royal Esplanade MANLY QLD 4179 AUS
www.rqys.com.au

NoR Attachment A – Schedule & Fees

		Entry Fee	Late Fee	# of Races	Monday 15-Dec	Tuesday 16-Dec	Wednesday 17-Dec	Thursday 18-Dec	Friday 19-Dec	Saturday 20-Dec	
	Regatta Office Hours				12:00 - 17:00	08:30 - 17:00	08:30 - 17:00	08:30 - 17:00	08:30 - 17:00	08:30 - 17:00	
	Competitors Briefing					9:00	9:00	9:00			
	Coach/Support Personnel Briefing				10:00	10:00	10:00	10:00	10:00	10:00	
Alpha Course	International Finn	\$240.00	\$100.00	9			Registration	Racing	Racing	Racing/Presentation	
	International OK Dinghy	\$240.00	\$100.00	9			Registration	Racing	Racing	Racing/Presentation	
	29er	\$300.00	\$100.00	9			Registration	Racing	Racing	Racing/Presentation	
	49er, 49FX	\$300.00	\$100.00	9			Registration	Racing	Racing	Racing/Presentation	
	International 420	\$300.00	\$100.00	9			Registration	Racing	Racing	Racing/Presentation	
	International 470 Mixed	\$300.00	\$100.00	9			Registration	Racing	Racing	Racing/Presentation	
	Nacra 15	\$300.00	\$100.00	9			Registration	Racing	Racing	Racing/Presentation	
	Nacra 17	\$300.00	\$100.00	9			Registration	Racing	Racing	Racing/Presentation	
	Hobie 16	\$300.00	\$100.00	9			Registration	Racing	Racing	Racing/Presentation	
Bravo Course	ILCA 4	\$300.00	\$100.00	12		Registration	Racing	Racing	Racing	Racing/Presentation	
	ILCA 6	\$300.00	\$100.00	12		Registration	Racing	Racing	Racing	Racing/Presentation	
	ILCA 7	\$300.00	\$100.00	12		Registration	Racing	Racing	Racing	Racing/Presentation	
	RS 200	\$250.00	\$100.00	9			Registration	Racing	Racing	Racing/Presentation	
		Tasar	\$250.00	\$100.00	9			Registration	Racing	Racing	Racing/Presentation
Charlie Course	Optimist Intermediate	\$150.00	\$100.00	9			Registration	Racing	Racing	Racing/Presentation	
	Optimist Open	\$150.00	\$100.00	9			Registration	Racing	Racing	Racing/Presentation	
	Open Skiff	\$150.00	\$100.00	9			Registration	Racing	Racing	Racing/Presentation	
	Sabot (1 or 2 up)	\$150.00	\$100.00	9			Registration	Racing	Racing	Racing/Presentation	
	Flying Eleven	\$150.00	\$100.00	9			Registration	Racing	Racing	Racing/Presentation	
		RS Feva	\$150.00	\$100.00	9			Registration	Racing	Racing	Racing/Presentation
Delta Course	iQFoil – Open Men 8m	\$350.00	\$100.00	25	Registration	Racing	Racing	Racing	Racing	Racing/Presentation	
	iQFoil – Open Women 7.3m	\$350.00	\$100.00	25	Registration	Racing	Racing	Racing	Racing	Racing/Presentation	
	iQFoil – Youth U19 Men 8m	\$300.00	\$100.00	25	Registration	Racing	Racing	Racing	Racing	Racing/Presentation	
	iQFoil – Youth U19 Women 7.3m	\$300.00	\$100.00	25	Registration	Racing	Racing	Racing	Racing	Racing/Presentation	
		U17 Windfoil 7.3m max	\$300.00	\$100.00	25	Registration	Racing	Racing	Racing	Racing	Racing/Presentation
		Wing Foil	\$250.00	\$100.00	25		Registration	Racing	Racing	Racing	Racing/Presentation
Echo Course	Optimist Green Fleet	\$100.00	\$100.00	15			Registration	Racing	Racing	Racing/Presentation	

NoR Attachment B – Approximate Racing Area



NoR Attachment C– Location Information

EMERGENCY CONTACTS

Emergencies	000	
Regatta Director	0424 101 732	
Royal Queensland Yacht Squadron	(07) 3396 8666	578 Royal Esplanade, Manly QLD
Manly Coast Guard	(07) 3396 5911	40 Trafalgar St, Manly QLD
Wynnum Police	(07) 3308 8100	82 Pine St, Wynnum QLD
Wynnum Fire & Rescue	(07) 3396 3297	2006 Wynnum Rd, Wynnum West
Brisbane Water Police	(07) 3895 0333	2 Howard Smith Dr, Port of Brisbane

Location, access & communication of Next of Kin Details

Sailing Office & SailSys Databases including information gathered from regatta registrations and/or indemnity forms.

Location of Nearest Emergency Medical Facilities

Redlands Hospital	(07) 3488 3111	21 Weippin St, Cleveland QLD
-------------------	----------------	------------------------------

Location of Nearest Medical Facilities

Wynnum Family Health Service	(07) 3893 0093	116 Edith St, Wynnum QLD
Doctors on Manly Road	(07) 3348 6111	12 Manly Rd, Manly QLD
Silky Oaks Medical Practice	(07) 3396 9855	218 Manly Rd, Manly QLD
Dental On Cambridge	(07) 3348 6661	4/99 Cambridge Parade, Manly QLD

LOCAL SERVICES

Sail Maker

North Sails

1/264 Tingal Rd, Wynnum QLD
3396 5822

Hood Sails

181 Wynnum Esplanade, Wynnum QLD
0419 799 958

Ullman Sails

112 Glenora St, Wynnum QLD
(07) 3348 7245

Chandlery

Muir Marine

453 Esplanade, Manly QLD
(07) 3396 9988

Road Tech Marine

20 Redland Bay Rd, Capalaba QLD
(07) 3914 9543

Boat Building / Repairs – Located at RQYS

JSA Marine

(07) 3348 5682

David Glenn Boat Building

0412 878 144

Physio

Manly Physiotherapy & Pilates

3/443 Esplanade, Manly QLD
(07) 3396 8137

Bounce Physio Birkdale

190 Birkdale Rd, Birkdale QLD
(07) 3822 2122

Pharmacy

Manly Village Pharmacy

9/222 Stratton Terrace, Manly QLD
(07) 3396 8999

Groceries

IGA Manly Village

Cnr Stratton Tce & Cambridge Parade
(07) 3396 1980

Woolworths Wynnum Central

145 Florence St, Wynnum QLD
(07) 3513 4416

Butcher

The Local Butcher

222 Stratton Terrace, Manly QLD
(07) 3396 2195

Bakery

Manly Bakery

222 Stratton Terrace, Manly QLD
(07) 3396 5688

Accommodation

[Manly Marine Cover Motel](#)

Located on the Grounds of RQYS
(07) 3348 1000

Limited Camping Facilities at RQYS

[Limited camping MAY be available](#)
(07) 3396 8666

[The Manly Hotel](#)

54 Cambridge Parade, Manly QLD
(07) 3249 5999

[Waterloo Bay Hotel](#)

75 Berrima St, Wynnum QLD
(07) 3893 2344

[Pelican's Nestle Inn](#)

149 Wynnum Esplanade, Wynnum QLD
(07) 3396 3214

[Wynnum Anchor Motel](#)

14 Adam St, Wynnum QLD
(07) 3396 3037

LOCAL WEATHER TIDE

Local Weather:

The RQYS Weather Station can be found at:

<https://www.rqys.com.au/weather-station/>

The Weather Station records from above the club Bay Lookout.

BOM: Radar: <http://www.bom.gov.au/products/IDR663.loop.shtml>

Marine Forecast:

<http://www.bom.gov.au/qld/forecasts/moreton-bay.shtml>

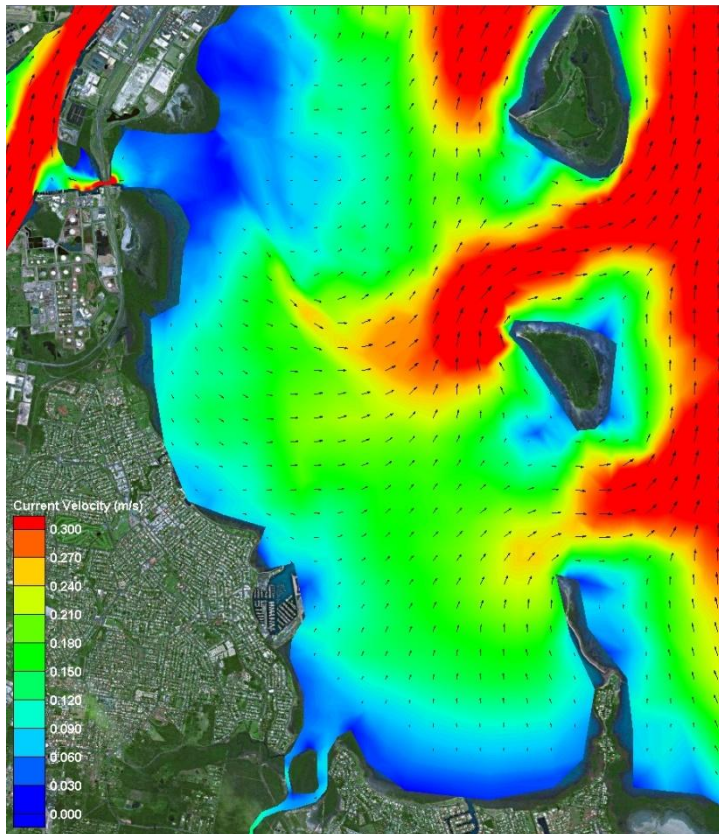
Other Popular forecasts:

Predict Wind: <https://forecast.predictwind.com/table/>

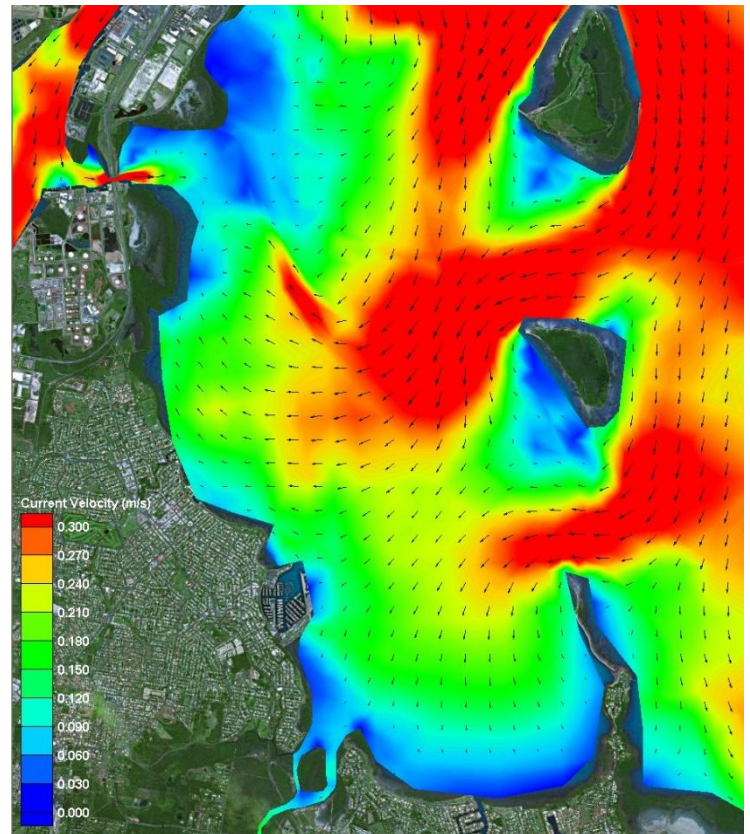
Seabreeze: <https://www.seabreeze.com.au/weather/wind-forecast/brisbane>

WillyWeather: <https://wind.willyweather.com.au/qld/brisbane/brisbane.html>

Waterloo Bay Ebb



Waterloo Bay Flood





ROYAL QUEENSLAND YACHT SQUADRON – THE SAILING GATEWAY TO MORETON BAY

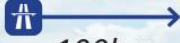
Gold Coast



75km

Brisbane CBD

Sunshine Coast



100km

30min

50min

20min

International

BNE

Domestic

Manly Station

Manly Harbour Village

Wynnum Central

Brisbane Volunteer Coastguard



Australian Sailing Office

Manly Marina Cove Motel

Clubhouse, coffeeshop & bistro
Function rooms

Main launching ramp & rigging lawns

Marina & Sailing Offices

Boat maintenance & chandlery

Showers / laundry

Eastern beach
Windsurfing

Bayview Lookout
Showers / laundry

Boat storage

Protected migratory bird roost



~ Founded 1885 ~

rqys.com.au

[f /RQYS.Manly](https://www.facebook.com/RQYS.Manly)



[/royal_qld_yacht_squadron](https://www.instagram.com/royal_qld_yacht_squadron)



Waterloo Bay

NoR Attachment D

Green Fleet - Introductory Rules for Racing

Version 1.02 - July 2021

Some Explanations

Windward and *Leeward*: The *leeward* side of your boat is the side where your mainsail lies. The *windward* side is the other side.

Port and *Starboard tack*: You are on *port* or *starboard tack* according to your *windward* side.

Advisor: A person appointed by the race organizers to assist competitors in understanding the rules and, when appropriate, to penalize a boat.

Basic Rules

1. You must comply with the principles of good sportsmanship.
2. You must try not to collide with another boat.

Rules When Boats Meet

3. When you and the other boat are on opposite *tacks*, if you are on *port tack* you must avoid the boat on *starboard tack*.
4. When you and the other boat are on the same *tack*, you must avoid the other boat
 - (a) if she is in front of you, or
 - (b) if she is on your *leeward* side.
5. After starting, when you and the other boat approach a mark or an object that both boats need to avoid, and the other boat is between you and the mark or other object, you must give her sufficient space to pass it safely on the same side. However, when the boats are on opposite tacks at a windward mark, this rule does not apply.
6. When the other boat is required to avoid you, if you change course, you must give the other boat an adequate opportunity to avoid you.

Other Rules

7. At the starting signal you must be behind the starting line.
8. After the starting signal, you must sail the course described by the race organizers.
9. You must not touch a mark of the course.
10. If you think you or another boat has broken a rule or if you are unclear about the rules at any time during the race, you must describe the incident to the *advisor* after the race. The *advisor* may then add two points to the score of any boat that has broken a rule. If the offence is serious, the *advisor* may refer the matter to the Jury who may deal with the matter as they deem suitable within the spirit of the racing rules of sailing.

