



---

# **RQYS School Fleet Racing Term 1 2026**

1 February – 15 February 2026 (3 weeks)

## **NOTICE OF RACE (NoR)**

ORGANISING AUTHORITY  
ROYAL QUEENSLAND YACHT SQUADRON LTD

*The notation '[NP]' in a rule of the sailing instructions (SIs) means that a boat may not protest another boat for breaking that rule. This changes RRS 60.1.*

*The notation '[DP]' in a rule of the sailing instructions (SI's) means that a protest committee can award a penalty less than disqualification (including no penalty) at their discretion. This changes RRS 60.5 and RRS 64.*

## **1. RULES**

- 1.1 The event is governed by the rules as defined in The Racing Rules of Sailing (RRS).
- 1.2 Where there is a difference between the Notice of Race (NoR) and the Sailing Instructions (SI) the SI take precedence.
- 1.3 RRS Appendix P (Special procedures for rule 42) may apply.
  - 1.3 (a) RRS Appendix P2.2 is amended as follows: When a boat is penalized more than once during the regatta, she shall promptly retire from each race in which she has been penalized. If she fails to do so she shall be disqualified without a hearing and her score shall not be excluded.
  - 1.3 (b) RRS Appendix P2.3 is deleted.
- 1.4 RRS Appendix T (Arbitration) will apply.
- 1.5 RRS 90.3(e) shall apply (Time Limit for changes to race scores) and is amended to "... more than 72 hours after...".
- 1.6 [DP][NP] Schools must provide one (1) volunteer per school for each day of racing.

## **2. CODE OF CONDUCT**

- 2.1 [DP] Competitors and support persons shall comply with reasonable requests from race officials.
- 2.2 [DP] Competitors and support persons shall handle any equipment or place advertising provided by the organizing authority with care, seamanship, in accordance with any instructions for its use and without interfering with its functionality.
- 2.3 Competitors must follow RQYS Club Policies (<https://www.rqys.com.au/membership/rules-and-regulations/> )

## **3. CHANGES TO RACE DOCUMENTS & SCHEDULE**

- 3.1 Any change to the race documents will be posted before 0900 on the day it will take effect, except that any change to the schedule of races will be posted by 2000 on the day before it will take effect.

## **4. SAILING INSTRUCTIONS**

- 4.1 The sailing instructions will be available after 1600 on 29/01/2026 at <https://www.rqys.com.au/school-sailing/>.

## **5. COMMUNICATION**

- 5.1 The official notice board (ONB) is located at <https://www.rqys.com.au/school-sailing/>.
- 5.2 Secondary to the Official noticeboard "instant messaging" system WhatsApp may be used to notify skippers of timely information, confirmation of days course, Protest Time limit etc. Join the group at <https://chat.whatsapp.com/FrqQAApiBvwFOnM8AxFuzx>
- 5.3 The race office is located at The RQYS Sailing Office located adjacent to the Main Rigging Lawn, telephone 3396 8666, email [sailing@rqys.com.au](mailto:sailing@rqys.com.au) .
- 5.4 [DP] From the first warning signal until the end of the last race of the day, except in an emergency, a boat shall not make voice or data transmissions and shall not receive voice or data communication that is not available to all boats.

## 6. ELIGIBILITY AND ENTRY

- 6.1 Entries consist of full-time students from the nominating school that meet the eligibility requirements and are students in Years 7 – 12.
- 6.2 All students sailing in these series must be less than 19 years of age at 31 December 2026.
- 6.3 All competitors are required to be a member of a yacht or sailing club affiliated with Australian Sailing and must provide a valid AS number.
- 6.4 Skippers must hold at least AS Start Sailing 1 and 2 or Tacker 1, 2 & 3 certificates or equivalent prior experience recognised by the Organising Authority. Copies of these certificates must be produced on request. (Schools can organise these courses through RQYS subject to availability. Contact the RQYS Sailing Academy on 07 3396 8666.)
- 6.5 Schools may enter eligible skippers and crew by downloading and completing the linked forms and sending back to [sailing@rqys.com.au](mailto:sailing@rqys.com.au) by 1500 Sunday 25 January 2026:
- 6.5 (a) Vessel and Skipper Registration: <https://www.rqys.com.au/wp-content/uploads/2025/12/Fleet-Skipper-Vessel-Registration-T1-2026.xlsx>
- 6.5 (b) Crew Registration: <https://www.rqys.com.au/wp-content/uploads/2025/12/Fleet-Crew-Entry-T1-2026.xlsx>
- 6.6 Casual entries shall be lodged to the Sailing Office and shall be received up to 9:30 AM on the day of racing.
- 6.7 To be considered an entry in the event, all registration requirements shall be completed.
- 6.8 Late entries may be accepted at the discretion of the Organising Authority.

## 7. FEES

- 7.1 Entry fees are as follows:

Fleet Racing Series Entry (per boat)	\$60.00
Fleet Racing Casual Entry per week	\$40.00

- 7.2 All regatta fees will be invoiced to each school after the conclusion of the regatta.
- 7.3 Any Refunds will be as per the RQYS Sailing Refunds Policies (<https://www.rqys.com.au/membership/rules-and-regulations/>).

## 8. INDICATIVE SCHEDULE

- 8.1 The Sailing Instructions schedule shall take precedence.
- 8.2

DATE	EVENT	FIRST WARNING SIGNAL or TIME
Sunday 01 February 2026	Coaches and Competitors Briefing on the Rigging Lawn	0830 hrs
	First Warning Signal (8 Races)	0930 hrs
Sunday 08 February 2026	Coaches Briefing on the Rigging Lawn	0830 hrs
	First Warning Signal (8 Races)	0930 hrs
Sunday 15 February 2026	Coaches Briefing on the Rigging Lawn	0830 hrs
	First Warning Signal (8 Races)	0930 hrs
	Presentation on the Rigging Lawn	ASAP After Racing

- 8.3 There will be no warning signal made after 1230 hrs.
- 8.4 School Volunteers meet immediately after Briefing.

## 9. EQUIPMENT INSPECTION

- 9.1 Boats may be inspected at any time.

## **10. VENUE**

- 10.1 NoR Attachment A shows the location of the racing areas.
- 10.2 NoR Attachment B shows the plan of the event venue.

## **11. COURSES**

- 11.1 The course to be sailed shall be Windward/Leeward as described in the Sailing Instructions.

## **12. SCORING AND FORMAT**

- 12.1 The scoring system is as follows:
  - 12.1 (a) Four (4) races must be completed to constitute a series.
  - 12.1 (b) When fewer than five (5) races have been completed, a boat's series score shall be the total of her race scores.
  - 12.1 (c) When from five (5) to seven (7) races have been completed, a boat's series score shall be the total of her race scores, excluding her worst score.
  - 12.1 (d) When from eight (8) or more races have been completed, a boat's series score shall be the total of her race scores, excluding her worst two (2) scores.
  - 12.1 (e) When from fifteen (15) or more races have been completed, a boat's series score shall be the total of her race scores, excluding her worst three (3) scores.
- 12.2 Results are tracked to a skippers sail number.
  - 12.2 (a) Skippers must confirm their sail number on the sign on sheet for every day of racing. Failure to comply may result in competitors being inaccurately scored.
- 12.3 The Organising Authority reserves the right to alter the format at any time.

## **13. [DP] SUPPORT PERSON VESSELS**

- 13.1 Team leaders, coaches and other support persons shall stay outside areas where boats are racing from the time of the preparatory signal for the first start until all boats have finished or retired or the race committee signals a postponement, general recall or abandonment.
- 13.2 If code flag "V" is flying from the committee boat, all Patrol and Support boats are to follow the requests of the Race Committee for their course on VHF Channel 77 (as per RRS 37).
- 13.3 Speed around the course shall be kept to a minimum with the boats engine to be in NEUTRAL when around sailors/people in the water.
- 13.4 Maximum speed whilst in the Harbour shall be 6 knots except in emergency situations.
- 13.5 In the case of a medical emergency, the vessel offering the First Aid, shall report the details to the Sailing Office on VHF Channel 77 "RQ77" and proceed to the "Fuel Pontoon" where RQYS Staff shall be on hand to assist.

## **14. BERTHING**

- 14.1 [DP][NP] Restrictions may be placed on where vessels may be stored or rigged by the RQYS Sailing or Marina office.

## **15. DATA PROTECTION**

- 15.1 By participating in an event, a competitor automatically grants to the Organising Authority and the sponsors of the event, the right in perpetuity, to make, use and show, from time to time and at their discretion, any motion pictures, still pictures and live, taped or film television and other reproductions of him/her during the period of the competition for said event in which the competitor participated and in all material related to the said event without compensation.

## 16. SAFETY REGULATIONS

- 16.1 [DP] A boat that retires from a race shall notify the race committee at the first reasonable opportunity.
- 16.2 All skippers shall SIGN ON before racing each day and SIGN OFF at the earliest possible time after the completion of racing (but not later than the end of protest time). The sign on will be available near the Sailing Office & The Main Rigging Law.
- 16.3 All Maritime Queensland Aquatic Event conditions must be followed including:
- 16.3 (a) All Participating ships are not to impede power driven vessels traversing Manly Boat Harbour and associated channels.
- 16.3 (b) All Participating ships are to obey the gazetted speed limit in Manly Boat Harbour (6 knots).
- 16.4 No Spinnakers are to be flown in the Manly Harbour 6-knot area.
- 16.5 No sailing vessel shall berth on or impeded traffic to/from the RQYS fuel dock without permission from the RQYS Sailing or Marina Office.

## 17. RISK STATEMENT

- 17.1 RRS 3 states: 'The responsibility for a boat's decision to participate in a race or to continue to race is hers alone.' By participating in this event each competitor agrees and acknowledges that sailing is a potentially dangerous activity with inherent risks. These risks include strong winds and rough seas, sudden changes in weather, failure of equipment, boat handling errors, poor seamanship by other boats, loss of balance on an unstable platform and fatigue resulting in increased risk of injury. **Inherent in the sport of sailing is the risk of permanent, catastrophic injury or death by drowning, trauma, hypothermia or other causes.**
- 17.2 All participants are required to comply with any safety provisions as mandated under the Racing Rules of Sailing, the Australian Sailing Special Regulations Part 2 for Off The Beach Boats, and any Class Rules that may apply. The Squadron encourages and supports competitors who believe it is appropriate to exceed the above requirements (such as the wearing of helmets, body armour, impact vests, etc.) if they or their guardian believe that conditions and their personal circumstances warrant. All competitor's attention is drawn to the Risk Statement - Section 17.1 of the Notice of Race.

## 18. INSURANCE

- 18.1 Each participating boat shall be insured with valid third-party liability insurance with a minimum cover of \$10,000,000AUD per incident or the equivalent.

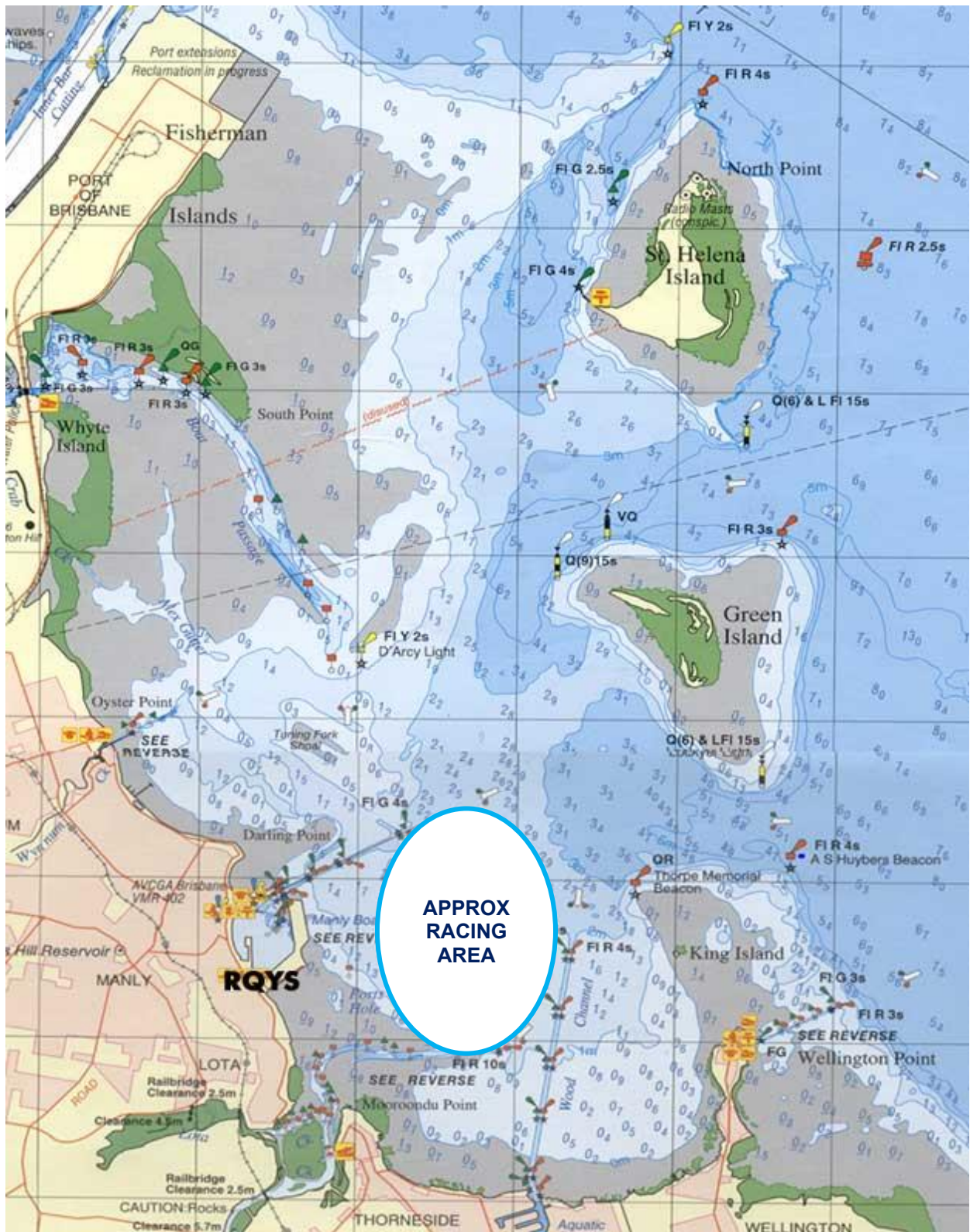
## 19. PRIZES

- 19.1 Prizes will be given as follows:
- 19.1 (a) 1st, 2nd and 3rd overall Scratch.
- 19.1 (b) 1<sup>st</sup> all female boat overall Scratch.
- 19.2 Other prizes may be awarded at the discretion of the Organising Authority

## 20. FURTHER INFORMATION

- 20.1 For further information please contact:  
RQYS Sailing: 07 3396 8666 / [sailing@rqys.com.au](mailto:sailing@rqys.com.au)  
578 Royal Esplanade MANLY QLD 4179 AUS  
[www.rqys.com.au](http://www.rqys.com.au)

# Attachment A – Approximate Racing Area



# Attachment B – Location Information

## EMERGENCY CONTACTS

---

Emergencies	000	
RQYS Sailing Manager	0424 101 732	
Royal Queensland Yacht Squadron	(07) 3396 8666	578 Royal Esplanade, Manly QLD
Manly Coast Guard	(07) 3396 5911	40 Trafalgar St, Manly QLD
Wynnum Police	(07) 3308 8100	82 Pine St, Wynnum QLD
Wynnum Fire & Rescue	(07) 3396 3297	2006 Wynnum Rd, Wynnum West
Brisbane Water Police	(07) 3895 0333	2 Howard Smith Dr, Port of Brisbane

### Location, access & communication of Next of Kin Details

Sailing Office & SailSys Databases including information gathered from regatta registrations and/or indemnity forms.

### Location of Nearest Emergency Medical Facilities

Redlands Hospital	(07) 3488 3111	21 Weippin St, Cleveland QLD
-------------------	----------------	------------------------------

### Location of Nearest Medical Facilities

Wynnum Family Health Service	(07) 3893 0093	116 Edith St, Wynnum QLD
Doctors on Manly Road	(07) 3348 6111	12 Manly Rd, Manly QLD
Silky Oaks Medical Practice	(07) 3396 9855	218 Manly Rd, Manly QLD
Dental On Cambridge	(07) 3348 6661	4/99 Cambridge Parade, Manly QLD

## LOCAL SERVICES

### Sail Maker

North Sails  
1/264 Tingal Rd, Wynnum QLD  
3396 5822

Hood Sails  
181 Wynnum Esplanade, Wynnum QLD  
0419 799 958

Ullman Sails  
112 Glenora St, Wynnum QLD  
(07) 3348 7245

### Chandlery

Muir Marine  
453 Esplanade, Manly QLD  
(07) 3396 9988

Road Tech Marine  
20 Redland Bay Rd, Capalaba QLD  
(07) 3914 9543

### Boat Building / Repairs – Located at RQYS

AW Marine  
049 479 204

David Glenn Boat Building  
0412 878 144

JSA Marine  
(07) 3348 5682

### Physio

Manly Physiotherapy & Pilates  
3/443 Esplanade, Manly QLD  
(07) 3396 8137

Bounce Physio Birkdale  
190 Birkdale Rd, Birkdale QLD  
(07) 3822 2122

### Pharmacy

Manly Village Pharmacy  
9/222 Stratton Terrace, Manly QLD  
(07) 3396 8999

### Groceries

IGA Manly Village  
Cnr Stratton Tce & Cambridge Parade  
(07) 3396 1980

Woolworths Wynnum Central  
145 Florence St, Wynnum QLD  
(07) 3513 4416

### Butcher

The Local Butcher  
222 Stratton Terrace, Manly QLD  
(07) 3396 2195

### Bakery

Manly Bakery  
222 Stratton Terrace, Manly QLD  
(07) 3396 5688

### Accommodation

[Manly Marine Cover Motel](#)  
Located on the Grounds of RQYS  
(07) 3348 1000

Limited Camping Facilities at RQYS  
[Limited camping MAY be available](#)  
(07) 3396 8666

[The Manly Hotel](#)  
54 Cambridge Parade, Manly QLD  
(07) 3249 5999

[Waterloo Bay Hotel](#)  
75 Berrima St, Wynnum QLD  
(07) 3893 2344

[Pelican's Nestle Inn](#)  
149 Wynnum Esplanade, Wynnum QLD  
(07) 3396 3214

[Wynnum Anchor Motel](#)  
14 Adam St, Wynnum QLD  
(07) 3396 3037

## LOCAL WEATHER TIDE

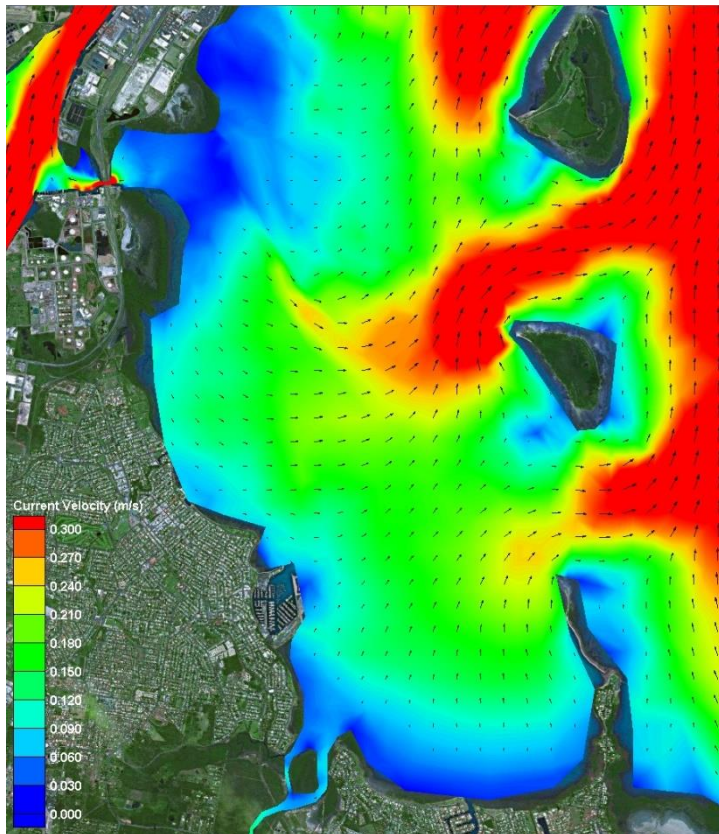
Local Weather: The RQYS Weather Station can be found at:  
<https://www.rqys.com.au/weather-station/>  
The Weather Station records from above the club Bay Lookout.

BOM: Radar: <http://www.bom.gov.au/products/IDR663.loop.shtml>  
Marine Forecast:  
<http://www.bom.gov.au/qld/forecasts/moreton-bay.shtml>

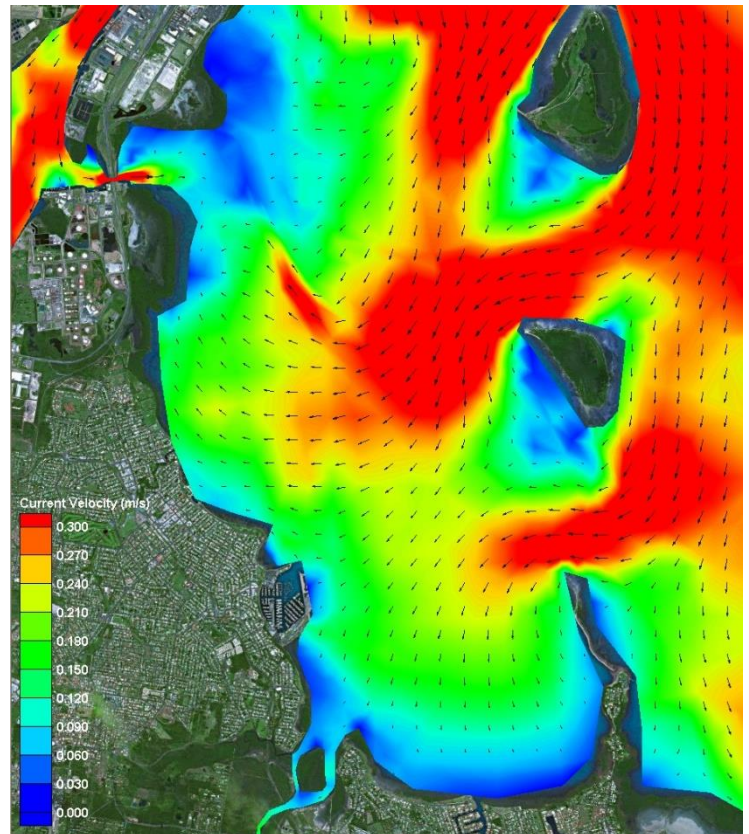
Other Popular forecasts:

Predict Wind: <https://forecast.predictwind.com/table/>  
Seabreeze: <https://www.seabreeze.com.au/weather/wind-forecast/brisbane>  
WillyWeather: <https://wind.willyweather.com.au/qld/brisbane/brisbane.html>

**Waterloo Bay Ebb**



**Waterloo Bay Flood**



LOCALITY		MAP GRID
578 Royal Esplanade access		A6
Eastern Beach (windsurfing)		P7-P8
Davenport Drive dog off-lead area		N10-P7
Inspiration Point lookout (fishing)		M10
Public (Harbour South) Carpark		A4
Public (South) Boatramp		B4
Public (South) Pontoon		C3

**NEARBY MANLY HARBOUR VILLAGE SERVICES**  
 900m / 5-15min

**CONVENIENT RQYS & BAYSIDE MANLY ACCESS**  
 Manly Station: 1.5km  
 Brisbane CBD: 30min  
 20min drive

BUILDINGS		MAP GRID
Australian Sailing (QLD)		C8
Bayview Lookout		P6
Boatyard [Former Marina] Office		H5
Cavill Building / FLAGS Room		C5
Clubhouse		C6
Manly Marina Cove Motel (MMCM)		A7 / B8
Marina Office		F5
Monument		K6
Sailing Academy		B5
Sailing Office		D6
Sheds / Storage Lockers		K6, J7- L7
Sports Amenities Block		F5
Trades / Services Sheds		H7
Volunteers' Sheds		D8, J5
Windsurfing Centre of Excellence		P6
Youth Squad Shed		F7

GROUNDS		MAP GRID
A Academy (Tackers) Rigging Lawn		B5
DOSA (designated smoking) areas		A6, A7
Kids' / dinghy beach		N5
1 Rigging Lawn 1 (Main / Functions)		D5
2 Rigging Lawn 2 (Marina Office)		F6
3 Rigging Lawn 3 (Youth Squad)		F7
4 Rigging Lawn 4 (Eastern grounds)		L6, M6
Regatta camping area		M7
Regatta trailer parking area		L6
Slipway 2 (Longer-term storage)		J7-L7
Windsurfing - rigging / hosedown		N7, P6

FACILITIES		MAP GRID
Dock - Bill Kirby (VIP: booking only)		D4
Dock - Fit-out work (short-term)		H4
Dock - Fuel (Diesel & PULP)		D4-E4
Fuel - Bowser (shoreside)		D5
HAZMAT Disposals shed		H5
Ramp 1 - Academy (Tackers)		C4
Ramp 2 - Main (Launch / retrieval)		E5
Ramp 3 - Slipway (Boatyard)		G5
Ramp 4 - Dinghy (Kids' beach)		N5
RQYS Boatyard		G5/6-H5/6
RQYS Sheds / Storage Lockers		K6 / J7-L7
Slipway 2 (longer-term storage)		J7-L7
Travelift (35t) & Slewing Crane		H4/H5

AMENITIES		MAP GRID
BBQs		B4, P6
Beach (RQYS - dinghy / kids')		N5
Beach (windsurfing, dogs, etc)		N10-P7
Gym		F5
Hosedown stations (boats, trailers, vehicles)		E7, F6, K7, M5
Hosedowns (personal / gear)		N7, P6
Kids' play areas		B4, N5
Laundry facilities		H5, P6
Seating / picnic areas		D5, G7, H6, N5, P6
Showers (bathrooms)		F6, H5, P6
Showers (outdoors)		F6, N7
Toilets		C5, C6, F6, H5, H7, P6

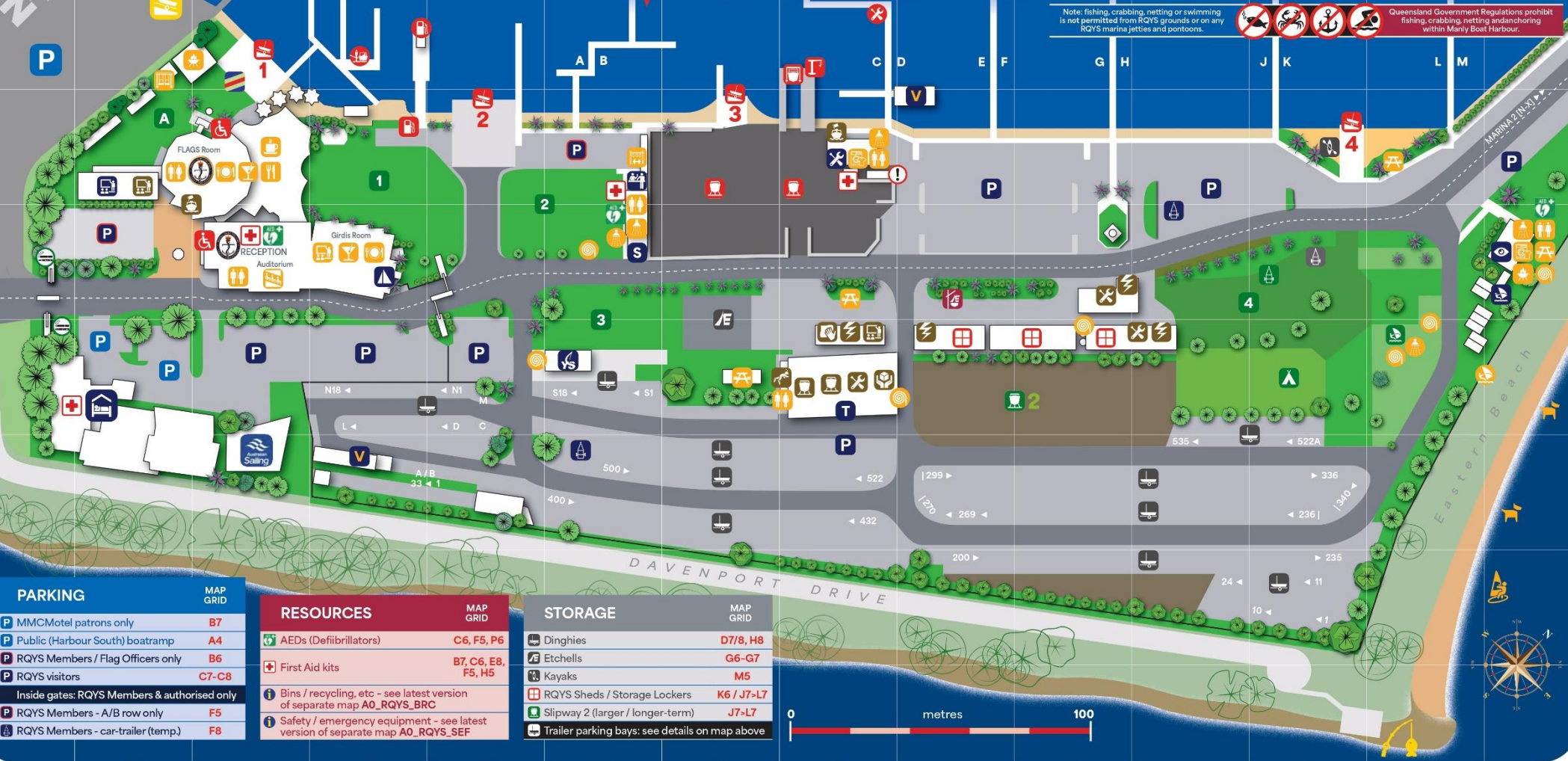
BUSINESSES		MAP GRID
Andrew Woodforth Marine		H7
Brisbane Scuba		H7
CMA Mechanical & Marine		K6
David Glenn Boat Builders		H7
Electech Industries		H7
Green Marine Electrical		K6
JSA Marine		H7
Ocean Logic		J7
Paper Sailors Rock		H7
Professional Boat Care		H7
Qld Marine Training Services		B5
Seadog Marine		H7
Signature Yacht Services		L7
SigTech Electrical		L7
World Wide Boat Brokers		B6
Yachtshare		H5

# RQYS DIRECTORY

**MAIN SQUADRON PRECINCT / MARINA 1**

Note: fishing, crabbing, netting or swimming is not permitted from RQYS grounds or on any RQYS marina jetties and pontoons.

Queensland Government Regulations prohibit fishing, crabbing, netting and anchoring within Manly Boat Harbour.



PARKING		MAP GRID
MMCMotel patrons only		B7
Public (Harbour South) boatramp		A4
RQYS Members / Flag Officers only		B6
RQYS visitors		C7-C8
Inside gates: RQYS Members & authorised only		
RQYS Members - A/B row only		F5
RQYS Members - car-trailer (temp.)		F8

RESOURCES		MAP GRID
AEDs (Defibrillators)		C6, F5, P6
First Aid kits		B7, C6, E8, F5, H5
Bins / recycling, etc - see latest version of separate map A0_RQYS_BRC		
Safety / emergency equipment - see latest version of separate map A0_RQYS_SEF		

STORAGE		MAP GRID
Dinghies		D7/8, H8
Etchells		G6-G7
Kayaks		M5
RQYS Sheds / Storage Lockers		K6 / J7-L7
Slipway 2 (larger / longer-term)		J7-L7
Trailer parking bays: see details on map above		

# ROYAL QUEENSLAND YACHT SQUADRON – THE SAILING GATEWAY TO MORETON BAY

Gold Coast

75km

Brisbane CBD

Sunshine Coast

100km



Waterloo Bay



~ Founded 1885 ~

[rqys.com.au](http://rqys.com.au)

[/RQYS.Manly](https://www.facebook.com/RQYS.Manly) [/royal\\_qld\\_yacht\\_squadron](https://www.instagram.com/royal_qld_yacht_squadron)

