



RQYS School Teams Racing Term 1 2026

22 February – 15 March 2026
(4 weeks)

NOTICE OF RACE (NoR)

ORGANISING AUTHORITY

ROYAL QUEENSLAND YACHT SQUADRON LTD
578 Royal Esplanade, Manly 4179, QLD, Australia

The notation '[NP]' in a rule of the sailing instructions (SIs) means that a boat may not protest another boat for breaking that rule. This changes RRS 60.1.

The notation '[DP]' in a rule of the sailing instructions (SI's) means that a protest committee can award a penalty less than disqualification (including no penalty) at their discretion. This changes RRS 60.5 and RRS 64.

1. RULES

- 1.1 The event is governed by the rules as defined in The Racing Rules of Sailing (RRS).
- 1.2 Where there is a difference between the Notice of Race (NoR) and the Sailing Instructions (SI) the SI take precedence.
- 1.3 RRS Appendix D (Team Racing Rules) will apply.
 - 1.3 (a) RRS Appendix D2 may apply subject to resourcing.
- 1.4 RRS 90.3(e) shall apply (Time Limit for changes to race scores) and is amended to "... more than 72 hours after...".

2. CODE OF CONDUCT

- 2.1 [DP] Competitors and support persons shall comply with reasonable requests from race officials.
- 2.2 [DP] Competitors and support persons shall handle any equipment or place advertising provided by the organizing authority with care, seamanship, in accordance with any instructions for its use and without interfering with its functionality.
- 2.3 Competitors must follow RQYS Club Policies (<https://www.rqys.com.au/membership/rules-and-regulations/>)

3. CHANGES TO RACE DOCUMENTS & SCHEDULE

- 3.1 Any change to the race documents will be posted before 0900 on the day it will take effect, except that any change to the schedule of races will be posted by 2000 on the day before it will take effect.

4. SAILING INSTRUCTIONS

- 4.1 The sailing instructions will be available after 1600 on 19 February 2026 at <https://www.rqys.com.au/school-sailing/>.

5. COMMUNICATION

- 5.1 The official notice board (ONB) is located at <https://www.rqys.com.au/school-sailing/>.
- 5.2 Secondary to the Official noticeboard "instant messaging" system WhatsApp may be used to notify skippers of timely information, confirmation of days course, Protest Time limit etc. Join the group at <https://chat.whatsapp.com/FrqQAapiBvwFOnM8AxFuzx>.
- 5.3 The race office is located at The RQYS Sailing Office located adjacent to the Main Rigging Lawn, telephone 3396 8666, email sailing@rqys.com.au.
- 5.4 [DP][NP] From the first warning signal until the end of the last race of the day, except in an emergency, a boat shall not make voice or data transmissions and shall not receive voice or data communication that is not available to all boats.

6. ELIGIBILITY AND ENTRY

- 6.1 Entries consist of full-time students from the nominating school that meet the eligibility requirements and are students in Years 7 – 12.
- 6.2 All students sailing in these series must be less than 19 years of age at 31 December 2026.
- 6.3 All competitors are required to be a member of a yacht or sailing club affiliated with Australian Sailing and must provide a valid AS number.
- 6.4 Skippers must hold at least AS Start Sailing 1 and 2 or Tacker 1, 2 & 3 certificates or equivalent prior experience recognised by the Organising Authority. Copies of these certificates must be produced on request. (Schools can organise these courses through RQYS subject to availability. Contact the RQYS Sailing Academy on 07 3396 8666.)
- 6.5 Schools may enter eligible teams by downloading and completing the linked form(s) and sending back to sailing@rqys.com.au by 1500 Sunday 15 February 2026
Team Registration Form: <https://www.rqys.com.au/wp-content/uploads/2026/01/Teams-Racing-Teams-Vessel-Registration-T1-2026.xlsx>
- 6.6 Teams shall consist of a maximum of eight (8) students from the nominating school that meet eligibility requirements.
- 6.7 Any combination of six (6) registered team members may race.
- 6.8 Team skippers for a school's higher ranked team shall not be eligible to skipper for a team in a lower division.
- 6.9 To be considered an entry in the event, all registration requirements shall be completed.
- 6.10 Late entries may be accepted at the discretion of the Organising Authority.

7. FEES

- 7.1 Entry fees are as follows:

Team Racing (per team)	\$350
------------------------	-------

- 7.2 All regatta fees will be invoiced to each school after the conclusion of the regatta.
- 7.3 Any Refunds will be as per the RQYS Sailing Refunds Policies (<https://www.rqys.com.au/membership/rules-and-regulations/>).

8. INDICATIVE SCHEDULE

- 8.1 The Sailing Instructions schedule shall take precedence.
- 8.2

DATE	EVENT	TIME
Sunday 22 February, 01 & 08 March 2026	Division 2 Briefing on the Rigging Lawn	0815 hrs
	Division 2 First Warning Signal	0900 hrs
	Division 1 Briefing on the Rigging Lawn	1200 hrs
	Division 1 First Warning Signal	1300 hrs
	Umpires debrief	After Racing
Sunday 15 March 2026	Division 2 Briefing on the Rigging Lawn	0815 hrs
	Division 2 First Warning Signal	0900 hrs
	Division 2 Presentation on the Rigging Lawn	After Racing
	Division 1 Briefing on the Rigging Lawn	1200 hrs
	Division 1 First Warning Signal	1300 hrs
	Division 1 Presentation on the Rigging Lawn	After Racing

- 8.3 On all scheduled race days, no warning signal for **Division 2** will be made after 1230 hrs and for **Division 1** 1630 hrs.

9. EQUIPMENT INSPECTION

- 9.1 Boats may be inspected at any time.

10. VENUE

- 10.1 NoR Attachment A shows the location of the racing areas.
- 10.2 NoR Attachment B shows the plan of the event venue.

11. COURSES

11.1 The course to be sailed shall be as described in the Sailing Instructions.

12. SCORING AND FORMAT

12.1 Racing shall be in a round robin format the last complete (80%+) round robin shall determine the final prize category results.

12.2 Teams will be seeded into **Division 1** and **Division 2** fleets based on results from teams racing term 4 2025.

12.3 Scoring shall be as per RRS Appendix D.

12.4 At the end of each of the first 2 days of racing, scores from rounds with more than 80% of the scheduled races completed will be used to determine teams to be promoted and demoted between the **Division 1** and **Division 2** fleets. The lowest scoring **Division 1** Fleet team will be demoted to the **Division 2** Fleet, and the highest scoring **Division 2** Fleet team will be promoted to the **Division 1** Fleet.

12.4 (a) At the end of each of the first three (3) days, scores from rounds with less than 80% of the scheduled races completed shall be used to break any ties.

12.4 (b) Results from the round robin stage on each day of racing will not be carried forward to the next day of racing.

12.5 The Organising Authority reserves the right to alter the format at any time.

13. [DP][NP] VOLUNTEERS FOR TEAM RACING

13.1 Schools must provide one (1) assistant umpire per school for each day of racing.

13.2 Schools participating in Team Racing must provide one (1) race management volunteer for one (1) or two (2) teams entered, and two (2) race management volunteer (3) teams entered. i.e. 1 team = 1 race management volunteer submitted, 2 teams = 1 race management volunteer submitted, 3 teams = 2 race management volunteers submitted.

14. [DP] SUPPORT PERSON VESSELS

14.1 No support or coach boats are allowed within 50 metres of the course, unless asked to assist by the race officer. The penalty for failing to comply with this requirement shall be at the discretion of the Jury and may result in the disqualification of all boats associated with the offending coach boat.

14.2 In the event of extreme conditions and if code flag "V" is flying from the committee boat, all Patrol and Support boats are to follow the requests of the Race Committee for their course on VHF Channel 77 (as per RRS 37).

14.3 Speed around the course shall be kept to a minimum with the boats engine to be in NEUTRAL when around sailors/people in the water.

14.4 Maximum speed whilst in the Harbour shall be 6 knots except in emergency situations.

14.5 In the case of a medical emergency, the vessel offering the First Aid, shall report the details to the Sailing Office on VHF Channel 77 "RQ77" and proceed to the "Fuel Pontoon" where RQYS Staff shall be on hand to assist.

15. BERTHING

15.1 Restrictions may be placed on where vessels may be stored or rigged by the RQYS Sailing or Marina office.

16. DATA PROTECTION

16.1 By participating in an event, a competitor automatically grants to the Organising Authority and the sponsors of the event, the right in perpetuity, to make, use and show, from time to time and at their discretion, any motion pictures, still pictures and live, taped or film television and other reproductions of him/her during the period of the competition for said event in which the competitor participated and in all material related to the said event without compensation.

17. RISK STATEMENT

- 17.1 RRS 3 states: 'The responsibility for a boat's decision to participate in a race or to continue to race is hers alone.' By participating in this event each competitor agrees and acknowledges that sailing is a potentially dangerous activity with inherent risks. These risks include strong winds and rough seas, sudden changes in weather, failure of equipment, boat handling errors, poor seamanship by other boats, loss of balance on an unstable platform and fatigue resulting in increased risk of injury. **Inherent in the sport of sailing is the risk of permanent, catastrophic injury or death by drowning, trauma, hypothermia or other causes.**
- 17.2 All participants are required to comply with any safety provisions as mandated under the Racing Rules of Sailing, the Australian Sailing Special Regulations Part 2 for Off The Beach Boats, and any Class Rules that may apply. The Squadron encourages and supports competitors who believe it is appropriate to exceed the above requirements (such as the wearing of helmets, body armour, impact vests, etc.) if they or their guardian believe that conditions and their personal circumstances warrant. All competitor's attention is drawn to the Risk Statement - Section 17.1 of the Notice of Race.

18. INSURANCE

- 18.1 Each participating boat shall be insured with valid third-party liability insurance with a minimum cover of \$10,000,000AUD per incident or the equivalent.

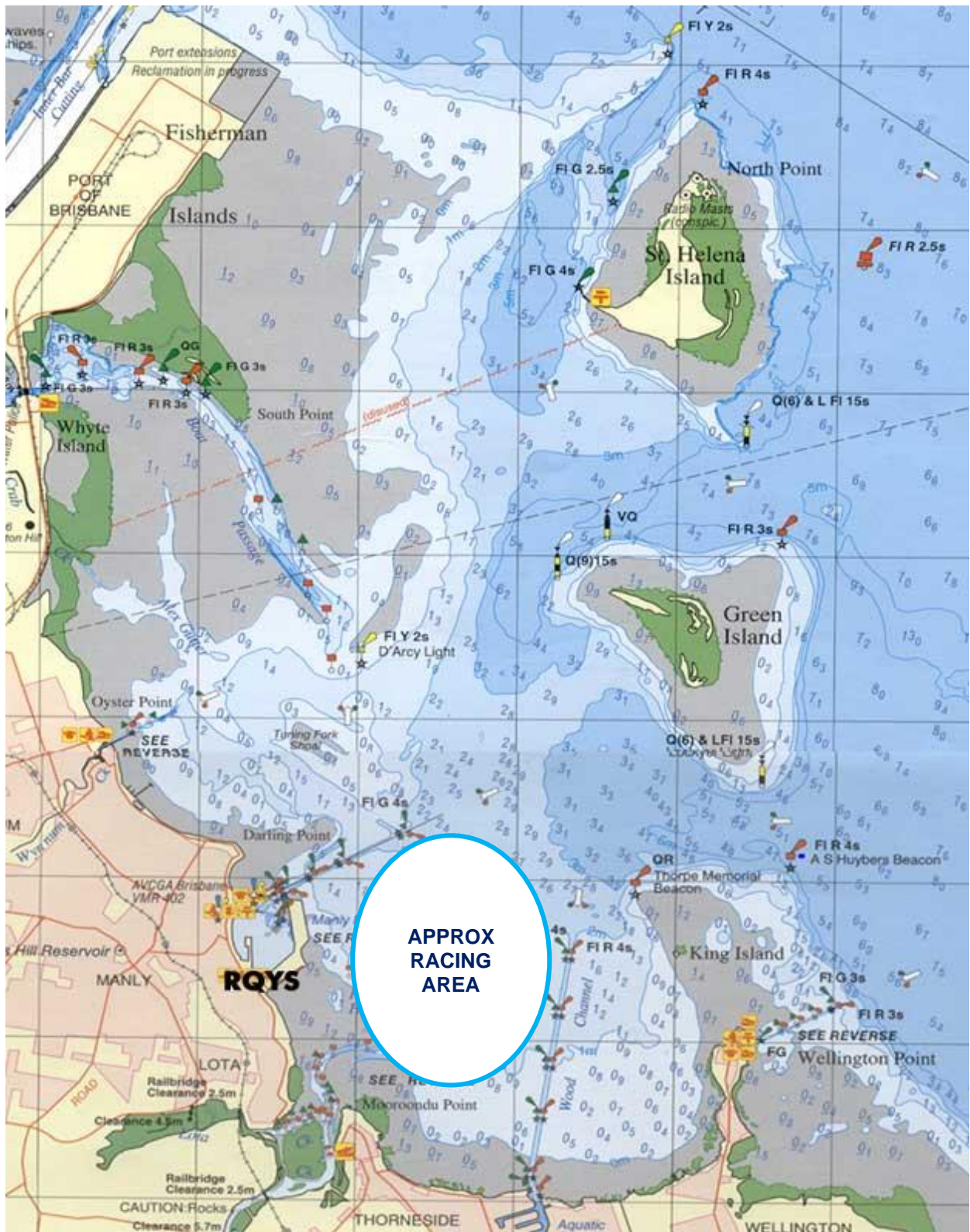
19. PRIZES

- 19.1 1st, 2nd and 3rd **Division 1** and **Division 2** fleets based on finals.
- 19.2 1st all female team **Division 1** and **Division 2** fleets based on finals.
- 19.3 As per NoR 6.6 a maximum of 8 medals will be awarded to each placing team.
- 19.4 Other prizes may be awarded at the discretion of the Organising Authority.

20. FURTHER INFORMATION

- 20.1 For further information please contact:
RQYS Sailing: 07 3396 8666 / sailing@rqys.com.au
578 Royal Esplanade MANLY QLD 4179 AUS
www.rqys.com.au

Attachment A – Approximate Racing Area



Attachment B – Location Information

EMERGENCY CONTACTS

Emergencies	000	
RQYS Sailing Manager	0424 101 732	
Royal Queensland Yacht Squadron	(07) 3396 8666	578 Royal Esplanade, Manly QLD
Manly Coast Guard	(07) 3396 5911	40 Trafalgar St, Manly QLD
Wynnum Police	(07) 3308 8100	82 Pine St, Wynnum QLD
Wynnum Fire & Rescue	(07) 3396 3297	2006 Wynnum Rd, Wynnum West
Brisbane Water Police	(07) 3895 0333	2 Howard Smith Dr, Port of Brisbane

Location, access & communication of Next of Kin Details

Sailing Office & SailSys Databases including information gathered from regatta registrations and/or indemnity forms.

Location of Nearest Emergency Medical Facilities

Redlands Hospital	(07) 3488 3111	21 Weippin St, Cleveland QLD
-------------------	----------------	------------------------------

Location of Nearest Medical Facilities

Wynnum Family Health Service	(07) 3893 0093	116 Edith St, Wynnum QLD
Doctors on Manly Road	(07) 3348 6111	12 Manly Rd, Manly QLD
Silky Oaks Medical Practice	(07) 3396 9855	218 Manly Rd, Manly QLD
Dental On Cambridge	(07) 3348 6661	4/99 Cambridge Parade, Manly QLD

LOCAL SERVICES

Sail Maker

North Sails
1/264 Tingal Rd, Wynnum QLD
3396 5822

Hood Sails
181 Wynnum Esplanade, Wynnum QLD
0419 799 958

Ullman Sails
112 Glenora St, Wynnum QLD
(07) 3348 7245

Chandlery

Muir Marine
453 Esplanade, Manly QLD
(07) 3396 9988

Road Tech Marine
20 Redland Bay Rd, Capalaba QLD
(07) 3914 9543

Boat Building / Repairs – Located at RQYS

AW Marine
049 479 204

David Glenn Boat Building
0412 878 144

JSA Marine
(07) 3348 5682

Physio

Manly Physiotherapy & Pilates
3/443 Esplanade, Manly QLD
(07) 3396 8137

Bounce Physio Birkdale
190 Birkdale Rd, Birkdale QLD
(07) 3822 2122

Pharmacy

Manly Village Pharmacy
9/222 Stratton Terrace, Manly QLD
(07) 3396 8999

Groceries

IGA Manly Village
Cnr Stratton Tce & Cambridge Parade
(07) 3396 1980

Woolworths Wynnum Central
145 Florence St, Wynnum QLD
(07) 3513 4416

Butcher

The Local Butcher
222 Stratton Terrace, Manly QLD
(07) 3396 2195

Bakery

Manly Bakery
222 Stratton Terrace, Manly QLD
(07) 3396 5688

Accommodation

[Manly Marine Cover Motel](#)
Located on the Grounds of RQYS
(07) 3348 1000

Limited Camping Facilities at RQYS
[Limited camping MAY be available](#)
(07) 3396 8666

[The Manly Hotel](#)
54 Cambridge Parade, Manly QLD
(07) 3249 5999

[Waterloo Bay Hotel](#)
75 Berrima St, Wynnum QLD
(07) 3893 2344

[Pelican's Nestle Inn](#)
149 Wynnum Esplanade, Wynnum QLD
(07) 3396 3214

[Wynnum Anchor Motel](#)
14 Adam St, Wynnum QLD
(07) 3396 3037

LOCAL WEATHER TIDE

Local Weather:

The RQYS Weather Station can be found at:

<https://www.rqys.com.au/weather-station/>

The Weather Station records from above the club Bay Lookout.

BOM: Radar: <http://www.bom.gov.au/products/IDR663.loop.shtml>

Marine Forecast:

<http://www.bom.gov.au/qld/forecasts/moreton-bay.shtml>

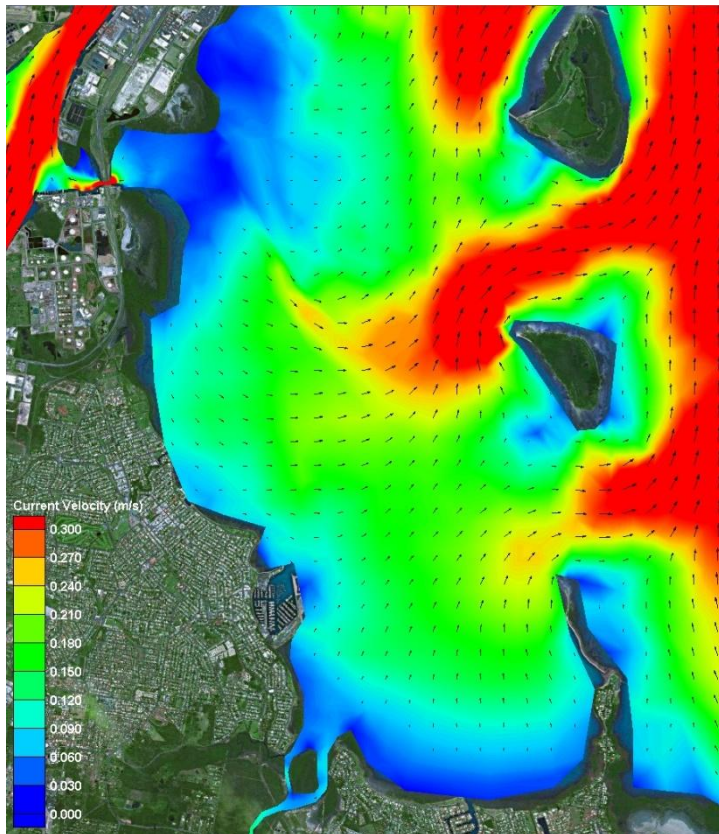
Other Popular forecasts:

Predict Wind: <https://forecast.predictwind.com/table/>

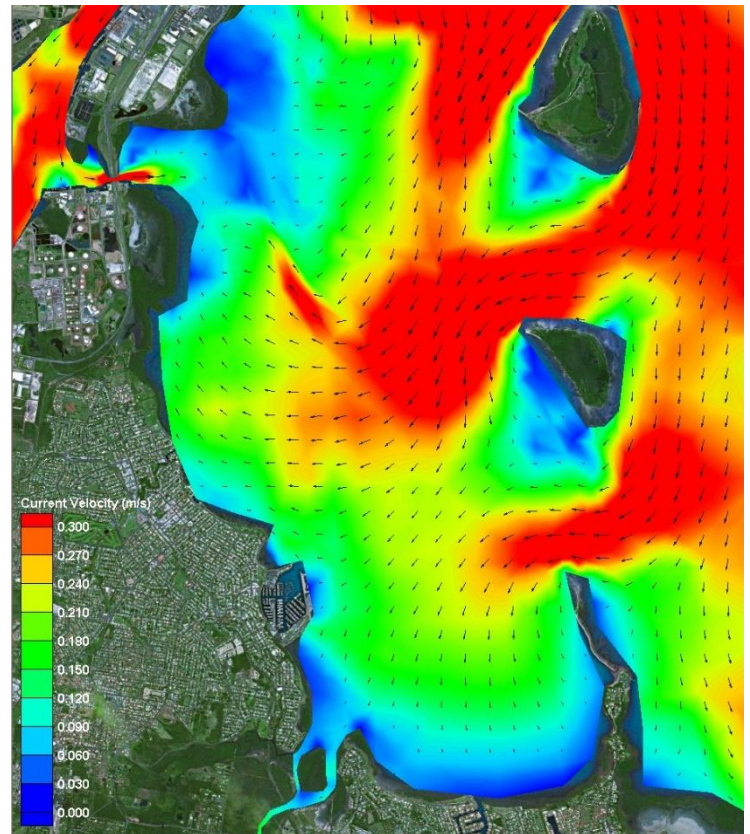
Seabreeze: <https://www.seabreeze.com.au/weather/wind-forecast/brisbane>

WillyWeather: <https://wind.willyweather.com.au/qld/brisbane/brisbane.html>

Waterloo Bay Ebb



Waterloo Bay Flood



LOCALITY		MAP GRID
578 Royal Esplanade access		A6
Eastern Beach (windsurfing)		P7-P8
Davenport Drive dog off-lead area		N10-P7
Inspiration Point lookout (fishing)		M10
Public (Harbour South) Carpark		A4
Public (South) Boatramp		B4
Public (South) Pontoon		C3

NEARBY MANLY HARBOUR VILLAGE SERVICES
 900m / 5-15min

CONVENIENT RQYS & BAYSIDE MANLY ACCESS
 Manly Station: 1.5km
 Brisbane CBD: 30min
 20min drive

BUILDINGS		MAP GRID
Australian Sailing (QLD)		C8
Bayview Lookout		P6
Boatyard [Former Marina] Office		H5
Cavill Building / FLAGS Room		C5
Clubhouse		C6
Manly Marina Cove Motel (MMCM)		A7 / B8
Marina Office		F5
Monument		K6
Sailing Academy		B5
Sailing Office		D6
Sheds / Storage Lockers		K6, J7- L7
Sports Amenities Block		F5
Trades / Services Sheds		H7
Volunteers' Sheds		D8, J5
Windsurfing Centre of Excellence		P6
Youth Squad Shed		F7

GROUNDS		MAP GRID
A Academy (Tackers) Rigging Lawn		B5
DOSA (designated smoking) areas		A6, A7
Kids' / dinghy beach		N5
1 Rigging Lawn 1 (Main / Functions)		D5
2 Rigging Lawn 2 (Marina Office)		F6
3 Rigging Lawn 3 (Youth Squad)		F7
4 Rigging Lawn 4 (Eastern grounds)		L6, M6
Regatta camping area		M7
Regatta trailer parking area		L6
Slipway 2 (Longer-term storage)		J7-L7
Windsurfing - rigging / hosedown		N7, P6

FACILITIES		MAP GRID
Dock - Bill Kirby (VIP: booking only)		D4
Dock - Fit-out work (short-term)		H4
Dock - Fuel (Diesel & PULP)		D4-E4
Fuel - Bowser (shoreside)		D5
HAZMAT Disposals shed		H5
Ramp 1 - Academy (Tackers)		C4
Ramp 2 - Main (Launch / retrieval)		E5
Ramp 3 - Slipway (Boatyard)		G5
Ramp 4 - Dinghy (Kids' beach)		N5
RQYS Boatyard		G5/6-H5/6
RQYS Sheds / Storage Lockers		K6 / J7-L7
Slipway 2 (longer-term storage)		J7-L7
Travelift (35t) & Slewing Crane		H4/H5

AMENITIES		MAP GRID
BBQs		B4, P6
Beach (RQYS - dinghy / kids')		N5
Beach (windsurfing, dogs, etc)		N10-P7
Gym		F5
Hosedown stations (boats, trailers, vehicles)		E7, F6, K7, M5
Hosedowns (personal / gear)		N7, P6
Kids' play areas		B4, N5
Laundry facilities		H5, P6
Seating / picnic areas		D5, G7, H6, N5, P6
Showers (bathrooms)		F6, H5, P6
Showers (outdoors)		F6, N7
Toilets		C5, C6, F6, H5, H7, P6

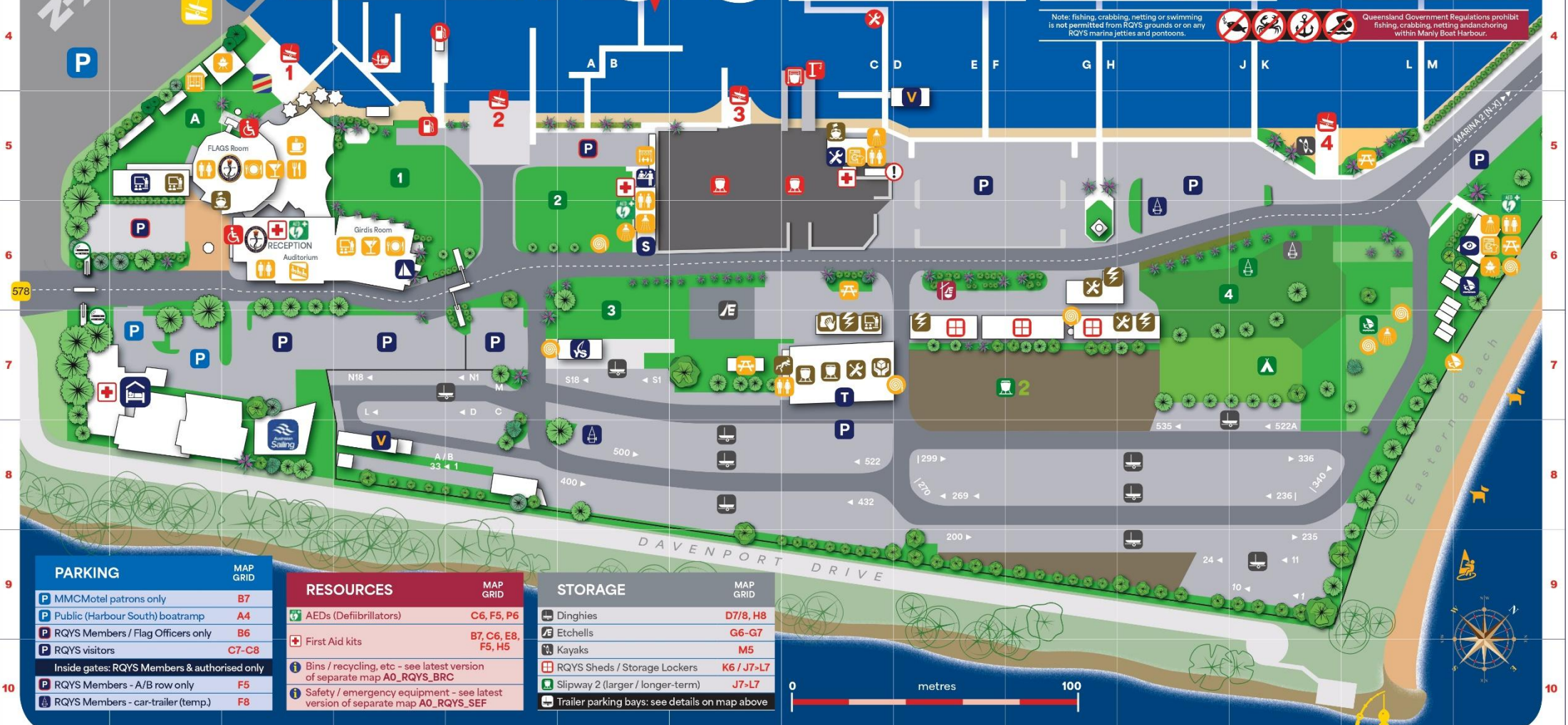
BUSINESSES		MAP GRID
Andrew Woodforth Marine		H7
Brisbane Scuba		H7
CMA Mechanical & Marine		K6
David Glenn Boat Builders		H7
Electech Industries		H7
Green Marine Electrical		K6
JSA Marine		H7
Ocean Logic		J7
Paper Sailors Rock		H7
Professional Boat Care		H7
Qld Marine Training Services		B5
Seadog Marine		H7
Signature Yacht Services		L7
SigTech Electrical		L7
World Wide Boat Brokers		B6
Yachtshare		H5

RQYS DIRECTORY

MAIN SQUADRON PRECINCT / MARINA 1

Note: fishing, crabbing, netting or swimming is not permitted from RQYS grounds or on any RQYS marina jetties and pontoons.

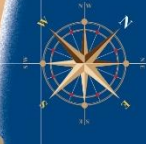
Queensland Government Regulations prohibit fishing, crabbing, netting and anchoring within Manly Boat Harbour.



PARKING		MAP GRID
MMC Motel patrons only		B7
Public (Harbour South) boatramp		A4
RQYS Members / Flag Officers only		B6
RQYS visitors		C7-C8
Inside gates: RQYS Members & authorised only		
RQYS Members - A/B row only		F5
RQYS Members - car-trailer (temp.)		F8

RESOURCES		MAP GRID
AEDs (Defibrillators)		C6, F5, P6
First Aid kits		B7, C6, E8, F5, H5
Bins / recycling, etc - see latest version of separate map A0_RQYS_BRC		
Safety / emergency equipment - see latest version of separate map A0_RQYS_SEF		

STORAGE		MAP GRID
Dinghies		D7/8, H8
Etchells		G6-G7
Kayaks		M5
RQYS Sheds / Storage Lockers		K6 / J7>L7
Slipway 2 (larger / longer-term)		J7>L7
Trailer parking bays: see details on map above		



ROYAL QUEENSLAND YACHT SQUADRON – THE SAILING GATEWAY TO MORETON BAY

Gold Coast

75km

Brisbane CBD

Sunshine Coast

100km



Waterloo Bay



~ Founded 1885 ~

rqys.com.au

[/RQYS.Manly](https://www.facebook.com/RQYS.Manly) [/royal_qld_yacht_squadron](https://www.instagram.com/royal_qld_yacht_squadron)

