



**Oceanea
Championships
Including Winter
Nationals**

6 – 8 June 2026

**NOTICE OF RACE
(NoR)**

ORGANISING AUTHORITY

ROYAL QUEENSLAND YACHT SQUADRON LTD
578 Royal Esplanade, Manly 4179, QLD, Australia

The notation '[NP]' in a rule of the sailing instructions (SIs) means that a boat may not protest another boat for breaking that rule. This changes RRS 60.1.

The notation '[DP]' in a rule of the sailing instructions (SI's) means that a protest committee can award a penalty in accordance with the RRS 64 and World Sailing guidelines (including no penalty) at their discretion. This changes RRS 60.5.

1. RULES

- 1.1 The event is governed by the rules as defined in The Racing Rules of Sailing (RRS).
- 1.2 The Australian Sailing prescriptions and special regulations Part 2 apply.
- 1.3 Where there is a difference between the Notice of Race (NoR) and the Sailing Instructions (SI) the SI take precedence.
- 1.4 RRS Appendix T (Arbitration) will apply.
- 1.5 The [VX One International Class Rules 1st January 2026](#) (CR) and the [VXOICA Event Regulations and Policies 1st January 2026](#) (ERP) shall apply.
 - 1.5 (a) Available at <https://vxone.org.au/index.php/about-vx-assoc/class-documents> and/or posted with this NoR

2. CODE OF CONDUCT

- 2.1 [DP] Competitors and support persons shall comply with reasonable requests from race officials.
- 2.2 [DP] Competitors and support persons shall handle any equipment or place advertising provided by the organizing authority with care, seamanship, in accordance with any instructions for its use and without interfering with its functionality.
- 2.3 Competitors must follow RQYS Club Policies (<https://www.rqys.com.au/membership/rules-and-regulations/>)

3. CHANGES TO RACE DOCUMENTS & SCHEDULE

- 3.1 Any change to the race documents will be posted before 0900 on the day it will take effect, except that any change to the schedule of races will be posted by 2000 on the day before it will take effect.

4. SAILING INSTRUCTIONS

- 4.1 The sailing instructions will be available after 1600 on 03/06/2026 at <https://www.rqys.com.au/event/vx-one-oceanea-championships-including-winter-nationals-2026/>.

5. COMMUNICATION

- 5.1 The official notice board (ONB) is located at <https://www.rqys.com.au/event/vx-one-oceanea-championships-including-winter-nationals-2026/> .
- 5.2 Secondary to the Official noticeboard "instant messaging" system WhatsApp may be used to notify skippers of timely information, confirmation of days course, Protest Time limit etc. the group can be joined at: <https://chat.whatsapp.com/E1N3ZAVg37iKEYRhGCrMK4>
- 5.3 The race office is located at The RQYS Sailing Office located adjacent to the Main Rigging Lawn, telephone 3396 8666, email sailing@rqys.com.au .
- 5.4 [DP] All boats shall carry a VHF radio capable of communicating on the [VHF maritime mobile band](#).
- 5.5 On the water, the race committee intends to monitor and communicate with competitors on VHF radio Channel 72.
- 5.6 If the race committee displays code flag L alternate VHF channel 77 may be used. This changes NoR 5.5.
- 5.7 [DP] While racing, except in an emergency, a boat shall not make voice or data transmissions and shall not receive voice or data communication that is not available to all boats.

6. ELIGIBILITY AND ENTRY

- 6.1 The event is open to all boats of the VX One class that comply with the CR and ERP and are financial members of the AVXOCA.
- 6.2 Boats may enter the event by registering online at <https://app.sailsys.com.au/club/25/entry/series/5616/pricing> by 1700 hrs 29/05/2026.
- 6.3 To be considered an entry in the event, a boat shall complete all registration requirements and pay all fees.
- 6.4 Late entries may be accepted at the discretion of the Organising Authority and will incur a \$100 late fee.
- 6.5 It is a requirement that each competing boat shall nominate final crew via the entry system or supply a separate Crew Declaration to the Organising Authority no later than 1700 hrs on 29/05/2026.
- 6.6 Any crew changes to those on the supplied Crew Declaration must be approved by the Organising Authority. It is the intent of this class rule to limit systematic attempts to adjust crew weights to suit forecast event conditions.

7. FEES

- 7.1 The regatta entry fee will be \$200.00 AUD.
- 7.2 Any Refunds will be as per the RQYS Sailing Refunds Policies (<https://www.rqys.com.au/membership/rules-and-regulations/>).

8. CREW LIMITATIONS

- 8.1 Shall be as per the CR and ERP.

9. ADVERTISING

- 9.1 Boats may be required to display advertising chosen and supplied by the organizing authority.

10. INDICATIVE SCHEDULE

- 10.1 The Sailing Instructions schedule shall take precedence.
- 10.2

DATE	EVENT	FIRST WARNING SIGNAL or TIME
Saturday 6 th June 2026	Briefing on the RQYS Boardwalk	0900 Hours
	First Warning Signal	Not Before 1100 Hours
Sunday 7 th June 2026	First Warning Signal	Not Before 1000 Hours
Monday 8 th June 2026	First Warning Signal	Not Before 1000 Hours
	Presentation on the RQYS Boardwalk	ASAP After Racing

- 10.3 To alert boats that a race or sequence of races will begin soon, the orange starting line flag will be displayed with one sound at least five minutes before a warning signal is made.
- 10.4 On the last scheduled day of racing no warning signal will be made after 1500 Hours.
- 10.5 No more than three (3) two-lap races shall be sailed on any one day and not more than five (5) one-lap races shall be sailed on any one day. If there is a mix of one-lap and two-lap races on any one day, not more than four (4) races shall be sailed on that day.
- 10.6 A maximum of fifteen (15) races are scheduled for the series.

11. EQUIPMENT INSPECTION

- 11.1 Boats may be inspected at any time.

12. VENUE

- 12.1 NoR Attachment A shows the location of the racing areas.
- 12.2 NoR Attachment C shows the plan of the event venue.

13. COURSES

- 13.1 The courses to be sailed will be Windward-Leeward courses as detailed in the Sailing Instructions. It is intended that legs will be of normal RQ course length (i.e. not short legs), and that one-lap races shall finish downwind (i.e. no short upwinds to finish as in some past short courses).

14. PENALTY SYSTEM

- 14.1 RRS 44.1 is amended in that the penalty for breaking a rule of RRS Part 2 shall be a One-Turn Penalty, except the penalty for breaking a rule of RRS Part 2 occurring within the zone as defined in RRS shall be a Two-Turn Penalty.

15. SCORING

- 15.1 Four (4) races are required to be completed to constitute a series.
 - 15.1 (a) When fewer than five (5) races have been completed, a boat's series score shall be the total of her race scores.
 - 15.1 (b) When from five (5) to nine (9) races have been completed, a boat's series score shall be the total of her race scores, excluding her worst score.
 - 15.1 (c) When ten (10) or more races have been completed, a boat's series score shall be the total of her race scores, excluding her worst two (2) scores.

16. SUPPORT PERSON VESSELS

- 16.1 Team leaders, coaches, other support personnel and support boats shall stay outside areas where boats are racing from the time of the warning signal until all boats have finished or the Race Committee signals a postponement, general recall or abandonment. Specific coach and support boat instructions will be stated in the Sailing Instructions.
- 16.2 Support boats must be registered with the Organising Authority and shall be marked with identifying numeral stickers, boats not already fitted with OA approved stickers may purchase stickers online or from the RQYS Sailing Office.
 - 16.2 (a) Support boat must register online at:
<https://www.revolutionise.com.au/rqys/events/352928>

17. BERTHING

- 17.1 Restrictions may be placed on where vessels may be stored or rigged by the RQYS Sailing or Marina office.
- 17.2 No tie down restraints may penetrate the ground deeper than 300mm due to lawn irrigation systems.
- 17.3 In water berthing shall be provided for the duration of the regatta in the Holding Pen (see Attachment B).

18. HAUL-OUT RESTRICTIONS

- 18.1 [DP] Boats shall not be hauled out during the event except with and according to the terms of prior written permission of the race committee.
- 18.2 Requests for haul out shall be made to the race committee at the first reasonable opportunity.

19. DATA PROTECTION

- 19.1 By participating in an event, a competitor automatically grants to the Organising Authority and the sponsors of the event, the right in perpetuity, to make, use and show, from time to time and at their discretion, any motion pictures, still pictures and live, taped or film television and other reproductions of him/her during the period of the competition for said event in which the competitor participated and in all material related to the said event without compensation.

20. RISK STATEMENT

- 20.1 RRS 3 states: 'The responsibility for a boat's decision to participate in a race or to continue to race is hers alone.' By participating in this event each competitor agrees and acknowledges that sailing is a potentially dangerous activity with inherent risks. These risks include strong winds and rough seas, sudden changes in weather, failure of equipment, boat handling errors, poor seamanship by other boats, loss of balance on an unstable platform and fatigue resulting in increased risk of injury. **Inherent in the sport of sailing is the risk of permanent, catastrophic injury or death by drowning, trauma, hypothermia or other causes.**
- 20.2 All participants are required to comply with any safety provisions as mandated under the Racing Rules of Sailing, the Australian Sailing Special Regulations Part 2 for Off The Beach Boats, and any Class Rules that may apply. The Squadron encourages and supports competitors who believe it is appropriate to exceed the above requirements (such as the wearing of helmets, body armour, impact vests, etc.) if they or their guardian believe that conditions and their personal circumstances warrant. All competitor's attention is drawn to the Risk Statement - Section 20.1 of the Notice of Race.

21. INSURANCE

- 21.1 Each participating boat shall be insured with valid third-party liability insurance with a minimum cover of \$10,000,000AUD per incident or the equivalent.

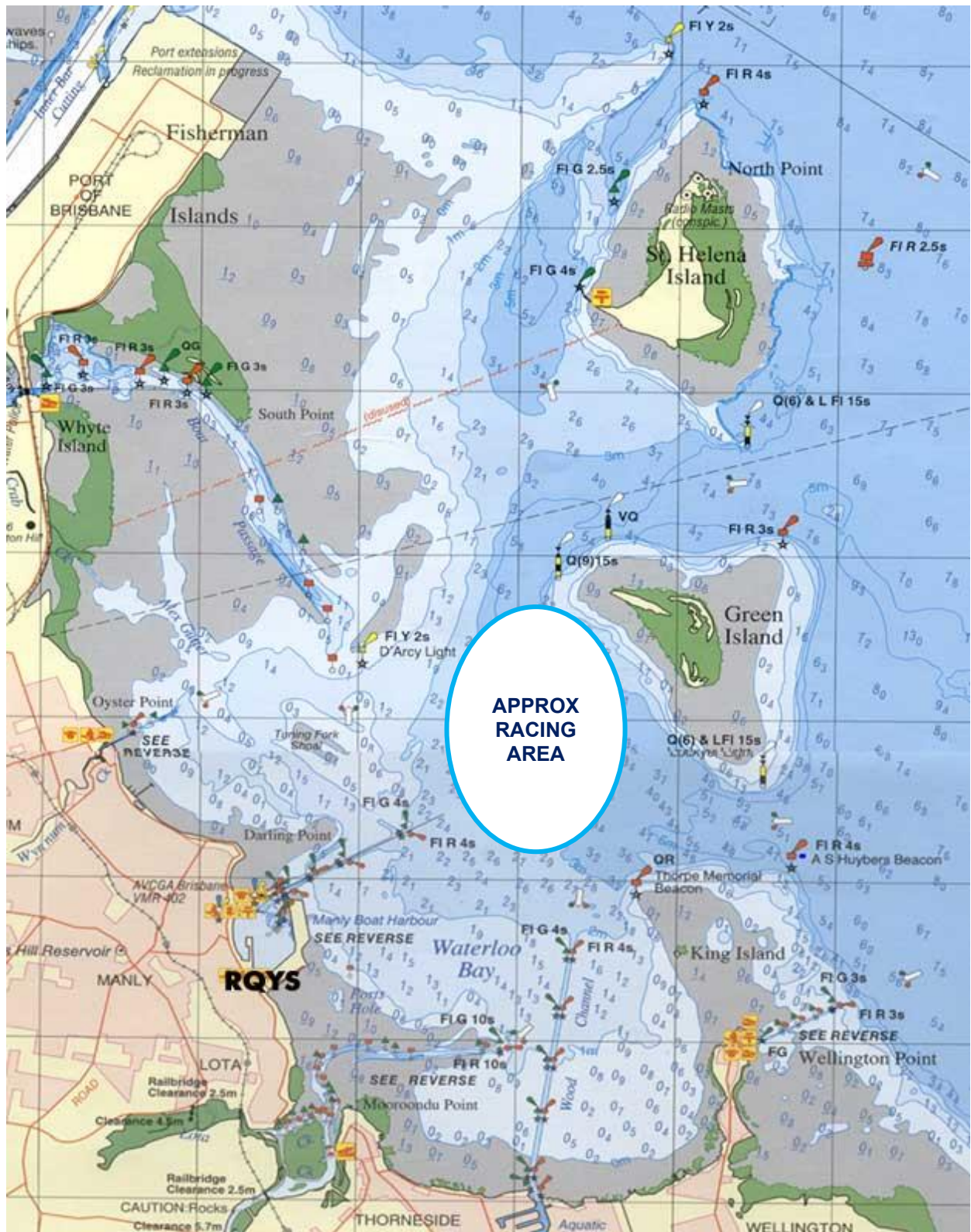
22. PRIZES

- 22.1 Prizes will be given as follows:
- 22.1 (a) 1st, 2nd and 3rd in Scratch.
 - 22.1 (b) 1st Masters Skipper over 60.
 - 22.1 (c) 1st Youth Skipper under 21 (or 1st under 21 crew or skipper if there are less than two under 21 skippers).
 - 22.1 (d) 1st Female (skipper or crew).
- 22.2 Other prizes may be awarded at the discretion of the Organising Authority

23. FURTHER INFORMATION

- 23.1 For further information please contact:
RQYS Sailing: 07 3396 8666 / sailing@rqys.com.au
578 Royal Esplanade MANLY QLD 4179 AUS
www.rqys.com.au

NoR Attachment A – Approximate Racing Area



NoR Attachment B – Berthing Information



Attachment C – Location Information

EMERGENCY CONTACTS

Emergencies	000	
RQYS Sailing Manager	0424 101 732	
Royal Queensland Yacht Squadron	(07) 3396 8666	578 Royal Esplanade, Manly QLD
Manly Coast Guard	(07) 3396 5911	40 Trafalgar St, Manly QLD
Wynnum Police	(07) 3308 8100	82 Pine St, Wynnum QLD
Wynnum Fire & Rescue	(07) 3396 3297	2006 Wynnum Rd, Wynnum West
Brisbane Water Police	(07) 3895 0333	2 Howard Smith Dr, Port of Brisbane

Location, access & communication of Next of Kin Details

Sailing Office & SailSys Databases including information gathered from regatta registrations and/or indemnity forms.

Location of Nearest Emergency Medical Facilities

Redlands Hospital	(07) 3488 3111	21 Weippin St, Cleveland QLD
-------------------	----------------	------------------------------

Location of Nearest Medical Facilities

Wynnum Family Health Service	(07) 3893 0093	116 Edith St, Wynnum QLD
Doctors on Manly Road	(07) 3348 6111	12 Manly Rd, Manly QLD
Silky Oaks Medical Practice	(07) 3396 9855	218 Manly Rd, Manly QLD
Dental On Cambridge	(07) 3348 6661	4/99 Cambridge Parade, Manly QLD

LOCAL SERVICES

Sail Maker

North Sails
1/264 Tingal Rd, Wynnum QLD
3396 5822

Hood Sails
181 Wynnum Esplanade, Wynnum QLD
0419 799 958

Ullman Sails
112 Glenora St, Wynnum QLD
(07) 3348 7245

Chandlery

Muir Marine
453 Esplanade, Manly QLD
(07) 3396 9988

Road Tech Marine
20 Redland Bay Rd, Capalaba QLD
(07) 3914 9543

Boat Building / Repairs – Located at RQYS

AW Marine
0409 479 204

David Glenn Boat Building
0412 878 144

JSA Marine
(07) 3348 5682

Physio

Manly Physiotherapy & Pilates
3/443 Esplanade, Manly QLD
(07) 3396 8137

Bounce Physio Birkdale
190 Birkdale Rd, Birkdale QLD
(07) 3822 2122

Pharmacy

Manly Village Pharmacy
9/222 Stratton Terrace, Manly QLD
(07) 3396 8999

Groceries

IGA Manly Village
Cnr Stratton Tce & Cambridge Parade
(07) 3396 1980

Woolworths Wynnum Central
145 Florence St, Wynnum QLD
(07) 3513 4416

Butcher

The Local Butcher
222 Stratton Terrace, Manly QLD
(07) 3396 2195

Bakery

Manly Bakery
222 Stratton Terrace, Manly QLD
(07) 3396 5688

Accommodation

[Manly Marine Cover Motel](#)
Located on the Grounds of RQYS
(07) 3348 1000

Limited Camping Facilities at RQYS
[Limited camping MAY be available](#)
(07) 3396 8666

[The Manly Hotel](#)
54 Cambridge Parade, Manly QLD
(07) 3249 5999

[Waterloo Bay Hotel](#)
75 Berrima St, Wynnum QLD
(07) 3893 2344

[Pelican's Nestle Inn](#)
149 Wynnum Esplanade, Wynnum QLD
(07) 3396 3214

[Wynnum Anchor Motel](#)
14 Adam St, Wynnum QLD
(07) 3396 3037

LOCAL WEATHER TIDE

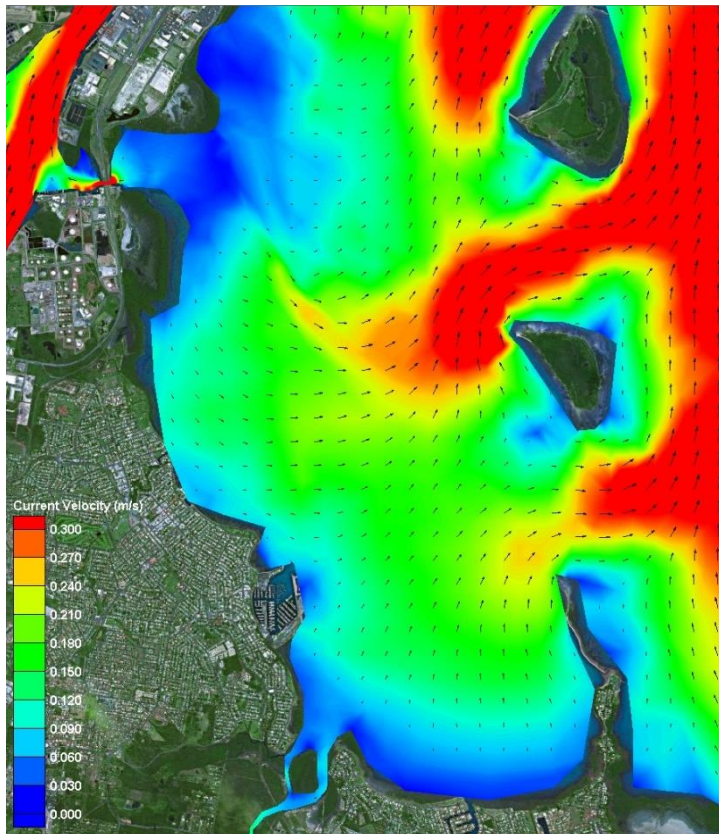
Local Weather: The RQYS Weather Station can be found at:
<https://www.rqys.com.au/weather-station/>
The Weather Station records from above the club Bay Lookout.

BOM: Radar: <http://www.bom.gov.au/products/IDR663.loop.shtml>
Marine Forecast:
<http://www.bom.gov.au/qld/forecasts/moreton-bay.shtml>

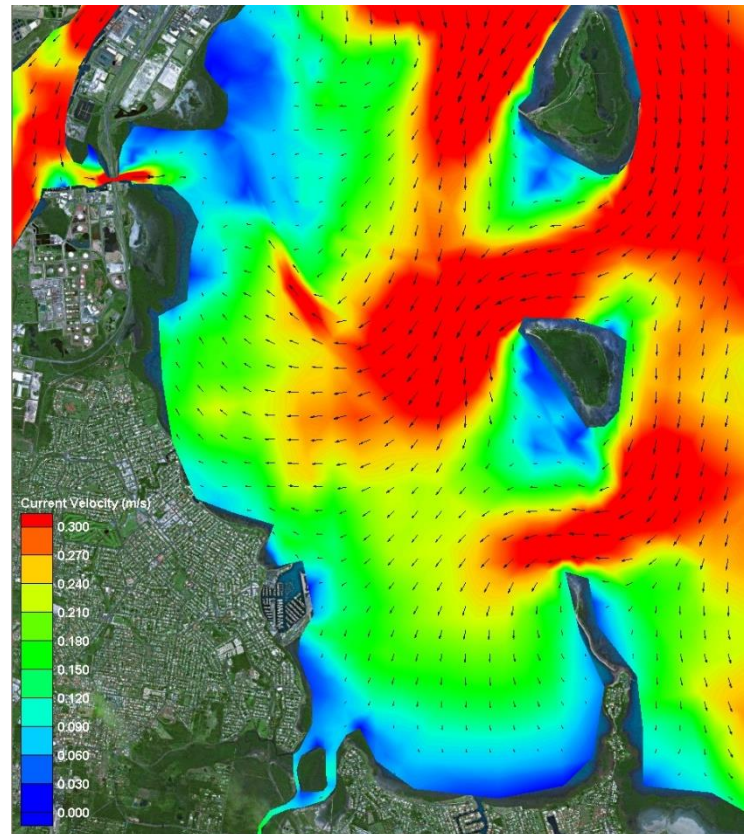
Other Popular forecasts:

Predict Wind: <https://forecast.predictwind.com/table/>
Seabreeze: <https://www.seabreeze.com.au/weather/wind-forecast/brisbane>
WillyWeather: <https://wind.willyweather.com.au/qld/brisbane/brisbane.html>

Waterloo Bay Ebb



Waterloo Bay Flood



LOCALITY		MAP GRID
578 Royal Esplanade access		A6
Eastern Beach (windsurfing)		P7-P8
Davenport Drive dog off-lead area		N10-P7
Inspiration Point lookout (fishing)		M10
Public (Harbour South) Carpark		A4
Public (South) Boatramp		B4
Public (South) Pontoon		C3

NEARBY MANLY HARBOUR VILLAGE SERVICES
 900m / 5-15min

CONVENIENT RQYS & BAYSIDE MANLY ACCESS
 Manly Station: 1.5km
 Brisbane CBD: 30min
 20min drive

BUILDINGS		MAP GRID
Australian Sailing (QLD)		C8
Bayview Lookout		P6
Boatyard [Former Marina] Office		H5
Cavill Building / FLAGS Room		C5
Clubhouse		C6
Manly Marina Cove Motel (MMCM)		A7 / B8
Marina Office		F5
Monument		K6
Sailing Academy		B5
Sailing Office		D6
Sheds / Storage Lockers		K6, J7- L7
Sports Amenities Block		F5
Trades / Services Sheds		H7
Volunteers' Sheds		D8, J5
Windsurfing Centre of Excellence		P6
Youth Squad Shed		F7

GROUNDS		MAP GRID
A Academy (Tackers) Rigging Lawn		B5
DOSA (designated smoking) areas		A6, A7
Kids' / dinghy beach		N5
1 Rigging Lawn 1 (Main / Functions)		D5
2 Rigging Lawn 2 (Marina Office)		F6
3 Rigging Lawn 3 (Youth Squad)		F7
4 Rigging Lawn 4 (Eastern grounds)		L6, M6
Regatta camping area		M7
Regatta trailer parking area		L6
Slipway 2 (Longer-term storage)		J7-L7
Windsurfing - rigging / hosedown		N7, P6

FACILITIES		MAP GRID
Dock - Bill Kirby (VIP: booking only)		D4
Dock - Fit-out work (short-term)		H4
Dock - Fuel (Diesel & PULP)		D4-E4
Fuel - Bowser (shoreside)		D5
HAZMAT Disposals shed		H5
Ramp 1 - Academy (Tackers)		C4
Ramp 2 - Main (Launch / retrieval)		E5
Ramp 3 - Slipway (Boatyard)		G5
Ramp 4 - Dinghy (Kids' beach)		N5
RQYS Boatyard		G5/6-H5/6
RQYS Sheds / Storage Lockers		K6 / J7-L7
Slipway 2 (longer-term storage)		J7-L7
Travelift (35t) & Slewing Crane		H4/H5

AMENITIES		MAP GRID
BBQs		B4, P6
Beach (RQYS - dinghy / kids')		N5
Beach (windsurfing, dogs, etc)		N10-P7
Gym		F5
Hosedown stations (boats, trailers, vehicles)		E7, F6, K7, M5
Hosedowns (personal / gear)		N7, P6
Kids' play areas		B4, N5
Laundry facilities		H5, P6
Seating / picnic areas		D5, G7, H6, N5, P6
Showers (bathrooms)		F6, H5, P6
Showers (outdoors)		F6, N7
Toilets		C5, C6, F6, H5, H7, P6

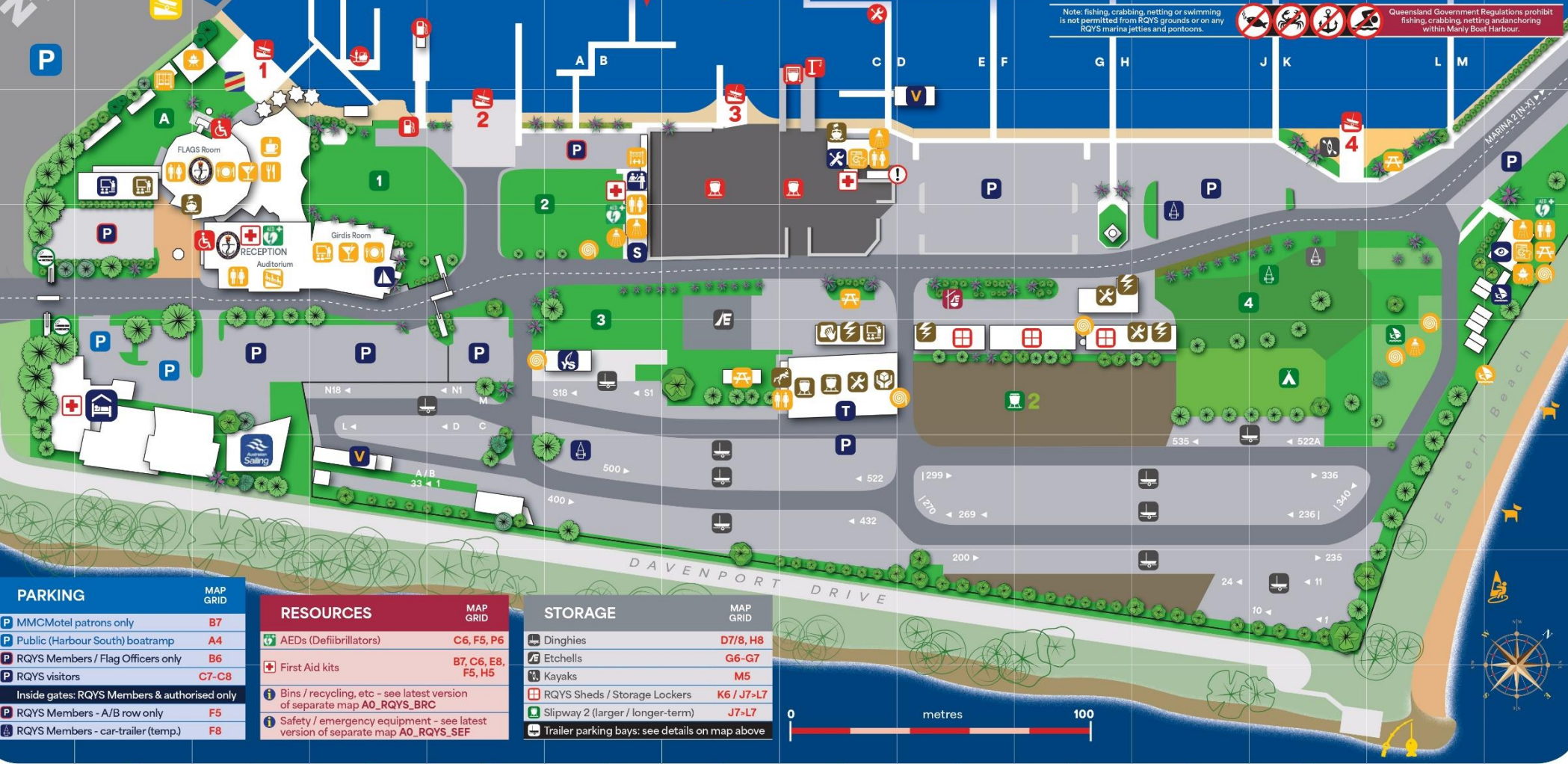
BUSINESSES		MAP GRID
Andrew Woodforth Marine		H7
Brisbane Scuba		H7
CMA Mechanical & Marine		K6
David Glenn Boat Builders		H7
Electech Industries		H7
Green Marine Electrical		K6
JSA Marine		H7
Ocean Logic		J7
Paper Sailors Rock		H7
Professional Boat Care		H7
Qld Marine Training Services		B5
Seadog Marine		H7
Signature Yacht Services		L7
SigTech Electrical		L7
World Wide Boat Brokers		B6
Yachtshare		H5

RQYS DIRECTORY

MAIN SQUADRON PRECINCT / MARINA 1

Note: fishing, crabbing, netting or swimming is not permitted from RQYS grounds or on any RQYS marina jetties and pontoons.

Queensland Government Regulations prohibit fishing, crabbing, netting and anchoring within Manly Boat Harbour.



PARKING		MAP GRID
MMCMotel patrons only		B7
Public (Harbour South) boatramp		A4
RQYS Members / Flag Officers only		B6
RQYS visitors		C7-C8
Inside gates: RQYS Members & authorised only		
RQYS Members - A/B row only		F5
RQYS Members - car-trailer (temp.)		F8

RESOURCES		MAP GRID
AEDs (Defibrillators)		C6, F5, P6
First Aid kits		B7, C6, E8, F5, H5
Bins / recycling, etc - see latest version of separate map A0_RQYS_BRC		
Safety / emergency equipment - see latest version of separate map A0_RQYS_SEF		

STORAGE		MAP GRID
Dinghies		D7/8, H8
Etchells		G6-G7
Kayaks		M5
RQYS Sheds / Storage Lockers		K6 / J7-L7
Slipway 2 (larger / longer-term)		J7-L7
Trailer parking bays: see details on map above		

ROYAL QUEENSLAND YACHT SQUADRON – THE SAILING GATEWAY TO MORETON BAY

Gold Coast

75km

Brisbane CBD

Sunshine Coast

100km



Waterloo Bay



~ Founded 1885 ~

rqys.com.au

[/RQYS.Manly](https://www.facebook.com/RQYS.Manly) [/royal_qld_yacht_squadron](https://www.instagram.com/royal_qld_yacht_squadron)

