



---

# WAGS 2025/26

First Wednesday in September 2025 to the last  
Wednesday in August 2026

## SAILING INSTRUCTIONS

(SI)

Including **Amendment 1 & 2**

ORGANISING AUTHORITY

**ROYAL QUEENSLAND YACHT SQUADRON LTD**  
578 Royal Esplanade, Manly 4179, QLD, Australia

*The notation '[NP]' in a rule of the sailing instructions (SIs) means that a boat may not protest another boat for breaking that rule. This changes RRS 60.1.*

*The notation '[DP]' in a rule of the sailing instructions (SI's) means that a protest committee can award a penalty less than disqualification (including no penalty) at their discretion. This changes Rules 60.5 and 64.*

*The notation '[SP]' in a rule of the NoR and/or SIs means that a standard penalty may be applied by the race committee without a hearing per RRS60.5(b)(3).*

## **1. RULES**

- 1.1 The event is governed by the rules as defined in The Racing Rules of Sailing (RRS).
- 1.2 The Australian Sailing prescriptions and special regulations Part 1 Category 5 apply.
- 1.3 Where lifelines complying with AS SR Part 1 Section 3 Rule 3.12 have not been fitted, all crew shall wear a visible personal floatation device as per AS SR Part 1 Section 5.
- 1.4 All boats using outboard engines shall comply with AS SR Part 1 Section 3 Rule 3.25.4.
- 1.5 ALL skippers shall comply with the Transport Operations (Marine Safety) Act 1994 and Regulation. In the event of a reportable Marine incident the RQYS Sailing Office is to be notified as soon as practical; but no later than 1 hour after the incident, a copy of the Marine Incident Report is required to be lodged with the RQYS Sailing Office at the same time it is lodged with Marine Safety Queensland.
- 1.6 Boats that make contact with another vessel shall be scored DSQ without a hearing. This changes RRS A5.1.
- 1.7 RRS Appendix T (Arbitration) will apply.

## **2. CODE OF CONDUCT**

- 2.1 [DP] Competitors and support persons shall comply with reasonable requests from race officials.
- 2.2 [DP] Competitors and support persons shall handle any equipment or place advertising provided by the organizing authority with care, seamanship, in accordance with any instructions for its use and without interfering with its functionality.
- 2.3 Competitors must follow RQYS Club Policies (<https://www.rqys.com.au/membership/rules-and-regulations/> )

## **3. CHANGES TO RACE DOCUMENTS & SCHEDULE**

- 3.1 Any change to the race documents will be posted before 0900 on the day it will take effect, except that any change to the schedule of races will be posted by 2000 on the day before it will take effect.

## **4. COMMUNICATION**

- 4.1 The official notice board (ONB) is located at <https://www.rqys.com.au/wags/>.
- 4.2 Secondary to the Official noticeboard "instant messaging" system WhatsApp may be used to notify skippers of timely information, confirmation of days course, Protest Time limit etc. Join the group at <https://chat.whatsapp.com/FoffPIRCBYG5O9PSC2Gmiq>.



- 4.3 The race office is located at The RQYS Sailing Office located adjacent to the Main Rigging Lawn, telephone 3396 8666, email [sailing@rqys.com.au](mailto:sailing@rqys.com.au) .
- 4.4 [DP] All boats shall carry a VHF radio capable of communicating on the [VHF maritime mobile band](#).
- 4.5 On the water, the race committee will make courtesy broadcasts to competitors on VHF radio Channel 72.
- 4.6 If the race committee displays code flag L alternate VHF channel 77 will be used, this changes section 4.5.
- 4.7 [DP] While racing, except in an emergency, a boat shall not make voice or data transmissions and shall not receive voice or data communication that is not available to all boats.

## 5. ELIGIBILITY AND FEES

- 5.1. WAGS races are open to all Monohull and Multihull Yachts (both trailerable and fixed keel) on the register of a yacht or sailing club affiliated with Australian Sailing (AS). Dinghies are not permitted to sail in WAGS.
- 5.2. Race fee is \$15.00 for all boats per race.
- 5.3. All crew are required to be included in the boat's online entry/registration before each race.
- 5.4. Single handed entries are NOT eligible.
- 5.5. Boats may enter the event by registering online at <https://app.sailsys.com.au/club/25/entry/series/4894/pricing>.
- 5.6. To be considered an entry in the event, a boat shall complete all registration requirements and pay all fees.
- 5.7. The minimum age for RQYS allocated crew is 17 or above.
- 5.8. Any refunds will be as per the RQYS Sailing Refunds Policies (<https://www.rqys.com.au/membership/rules-and-regulations/>).

## 6. SAIL RESTRICTIONS

- 6.1. All boats are to sail with a singular Jib or Genoa, and Mainsail only. Other sail combinations based on a boat's designed rig (e.g. Ketches, Schooners, etc.) are permitted with prior approval by the Race Committee. Loose luffed headsails (e.g. Screecher, Code 0, Spinnakers) are not permitted.
- 6.2. The headsail must be fully hanked, or attached by means of a luff groove device, to the forestay. Spinnaker poles and/or whisker poles are allowed for poling out headsails.
- 6.3. Boats shall use only one mainsail throughout the Race and only one headsail at a time for the duration of the Race.

## 7. SCHEDULE

### 7.1

DAY	EVENT	TIME
Each Wednesday at the discretion of the Race Committee	Boat Registration at WAGS table in RQ Bar or online via SailSys (Crew still need to be registered before every race, online on SailSys " <a href="#">Crew List</a> ")	Between 1100 and 1225hrs
	In-person Competitor Briefing in RQ Bistro	1215 hrs
	Racing	As per allocated start time
	Presentation in RQ Bar	1700 hrs. on the day of race
<b>WAGS SPECIAL EVENTS</b>		
Race 1: 19 Nov 2025	THE GEOFF ANDERSON MEMORIAL SUPER SERIES (7 RACES STARTING WITH) The Ross Jullyan Memorial Trophy	
Races 2 thru <b>6</b>	The first Wednesday each month December 2025 through to <b>April</b> 2026	
<b>Race 7</b>	<b>13<sup>th</sup> May 2026</b>	
17 December 2025	Christmas WAGS	
12 August 2026	Peter Beard Memorial Trophy WAGS -- Ekka Wednesday	

## 8. RACING AREA

- 8.1. All races will be conducted on Waterloo and Moreton Bay.

## 9. COURSES

- 9.1. All courses start and finish as per SI 11 and 12.
- 9.2. The courses to be sailed will be as per the course descriptions in the RQYS Yacht Racing Course Book 2025/26 Version 2: <https://www.rqys.com.au/wp-content/uploads/2026/03/RQYS-Yacht-Racing-Course-Book-2025-26-V2.0.pdf>
- 9.3. The course number confirming the course to be sailed will be displayed from the start boat. In the event that the start boat is not on station, competitors shall monitor Channel VHF 72 for course information.
- 9.4. Courses may be shortened as per RRS 32.

## 10. MARKS

- 10.1. When a navigation mark is nominated as a mark of a course it shall be left in the manner described in the course booklet, otherwise all navigation marks shall be observed in the correct manner.
- 10.2. Where a navigation mark is to be rounded due consideration to the weather conditions including tidal effect shall be given.

## 11. THE START

- 11.1. Races will be started as follows:
  - 11.1.1. Boats shall start no earlier than their allocated start time. All times are in Brisbane EST time. Syncing of your clock is recommended at <http://www.timeanddate.com/worldclock/fullscreen.html?n=47>.
  - 11.1.2. The Race Officer (starter) will usually raise a start bat 10 seconds prior to the minute and lower the start bat on the minute.
  - 11.1.3. A sound signal will be given to any yacht starting early and therefore they are required to restart. This changes RRS 26.
- 11.2. All boats shall keep clear of the start line and not cross in either direction prior to their designated start time.
- 11.3. A boat re-starting because of OCS shall return and re-enter the course via the rounding of the pin or start boat and keep clear of all starting boats. NO DIPPING.
- 11.4. The starting line will be between a staff displaying an orange flag on the start boat at the starboard end and an orange buoy at the port end approximately 300m to 800m from the outer Manly Harbour Leads.
- 11.5. In the case where the start boat is not on station, the start line shall be an extension of the Eastern Port and Starboard Lateral Beacons to the south and within 100m. In these circumstances boats are required to start at their allocated starting time.

## 12. THE FINISH

- 12.1. The finishing line will be between a staff displaying a blue flag on the race committee vessel and an orange buoy at the port end of the line.
- 12.2. When a course is shortened, the race committee will display flag S with 2 sounds and the finish line shall be at a rounding mark and a staff on the finish boat displaying flag S.
- 12.3. When a finish boat is not on station, the finish line shall be an extension of the Eastern Port and Starboard Lateral Beacons to the south and within 100m. Boats are to record and report their own finish times to the Sailing Office.

## 8. VENUE

- 8.1 Attachment B shows the plan of the event venue.

## 9. PENALTY SYSTEM

- 9.1 For all boats RRS 44.1 is changed so that the Two-Turns Penalty is replaced by the One-Turn Penalty.

## 13. TIME LIMIT

- 13.1. The time limit for all boats to be finished is 1600 hours.

## 14. PROTESTS

- 14.1. All WAGS races are intended to that of a **fun and enjoyable nature** and therefore there should be no reason to Protest. Competitors are encouraged to resolve their differences in a respectable manner.
- 14.2. Should an incident occur, that cannot be resolved, competitors are required to lodge a protest with the Sailing Office via an email to [sailing@rqys.com.au](mailto:sailing@rqys.com.au) by 1600 hrs, the day after the relevant Wags race. Protest forms are available at the sailing office and [online](#).

## 15. SCORING AND HANDICAPS

- 15.1. All Races:
- 15.1.1. Handicap start times will be allocated to each boat upon registration at the “WAGS Table” or via VHF once the committee/start boat displays station flag (orange).
  - 15.1.2. Each race is an individual race and will be scored as such with the exception of races for the Squadron Monohull and Multihull Championship.
- 15.2. Races to determine WAGS Squadron Multihull and Monohull Champions (The Geoff Anderson Memorial Super Series):
- 15.2.1. A Performance Based Handicap system will be in place for these races.
  - 15.2.2. The WAGS Squadron Monohull and Multihull Champions will be determined from the results of the following races as per section 7.
  - 15.2.3. There will be a drop after the completion of race 3 and 6.
  - 15.2.4. To qualify for these trophies the skipper/owner must be a Full member or equivalent of RQYS and their yacht registered with RQYS

## 16. SAFETY REGULATIONS

- 16.1. All competitors intending to start shall report to the WAGS Table located near the RQ Bar. to register for the day’s race or have completed online registration (per section 5.5) by no later than 1225 hrs.
- 16.2. A current / Intended POB shall be provided at Sign-On.
- 16.3. A boat that retires from a race shall notify the race committee on **VHF Channel 72** as soon as possible.
- 16.4. Attention is drawn to SI 25.

## 17. [NP][DP] AQUATIC EVENT CONDITIONS

- 17.1. It is a skippers responsibility to ensure all aquatic event conditions are followed, the Authority consent to hold aquatic event can be viewed at <https://www.rqys.com.au/wp-content/uploads/2025/08/25-0802-Signed-Authority-141st-Sailing-Season-Club-Racing-RQYS-30-Aug-to-30-November-2025.pdf>
- 17.2. Attention is drawn to the following conditions:
- 17.2.1. Participants / safety ship are not to impede commercial shipping.
  - 17.2.2. All participating ships and safety ships are not to impede power driven vessels traversing Manly Boat Harbour and associated channels.
  - 17.2.3. All participating ships and safety ships are to be briefed on the gazetted speed limit in Manly Boat Harbour.
    - 17.2.3.1. Page 10 from the Schedule of Speed Limits in QLD in SI Attachment A.
  - 17.2.4. All participating ships and safety ships equipped with VHF are to monitor VHF channel 12 and VHF channel 16.
  - 17.2.5. The Authority Holder must ensure that ships participating in the aquatic event observe a 20-metre exclusion zone around all Aids to Navigation.

## 18. DIVISIONS

- 18.1. Signals for divisions shall use the following flags:

DIVISION	FLAG
MONOHULLS	Numeral Pennant #1
MULTIHULLS	Numeral Pennant #5

## 19. CREW LIST

- 19.1. A complete and accurate crew list shall be submitted to the Sailing Office by all boats before their start time. Crew must be submitted electronically on SailSys, in the “Crew Lists” section under “Your Account” (<https://app.sailsys.com.au/crew> ).
- 19.2. The crew list shall contain the following information for each crew: Full Name; Club Member No; AS No; Telephone No; Email address; Emergency Contact Details.
- 19.3. A complete & accurate crew list submitted before a boat’s start time is a requirement of entry, boats failing to provide a crew list may not be deemed an official, complete entry and may not receive a result.

## **20. SAIL DAY PASS MEMBERSHIP**

- 20.1. For more the most up to date information please see the Sail & Social Day Pass Membership Policy: [Here \(https://www.rqys.com.au/membership/rules-and-regulations/\)](https://www.rqys.com.au/membership/rules-and-regulations/).

## **21. RACE OFFICIALS**

- 21.1. All official directions during the course of the race will be advised by the race officer on board the start/finish boat. This boat will be marked with a WAGS RC flag. To ensure there is no confusion during races, no other boats are to issue directions unless approved by the Race Officer or the RQYS Sailing Manager.

## **22. RACE CANCELLATION**

- 22.1. Racing will not occur if there is a gale or stronger wind warning issued for the day of racing.  
22.2. Racing may occur if a strong wind warning is issued for the day of racing.  
22.3. Any decision to race, postpone or abandon will be made by the RQYS Sailing Manager after consultation with the Race Officer.  
22.4. A decision to race on any given day does not relieve any competitor of his/her obligation under RRS 3, Decision to race.

## **23. ALTERNATE START / FINISH AREA**

- 23.1. The start/finish area may be altered depending on other racing being conducted in a "shared" racing area. The Race Officer will advise of any such change to the start/finish area at registration desk on the day of racing.

## **24. DATA PROTECTION**

- 24.1 By participating in an event, a competitor automatically grants to the Organising Authority and the sponsors of the event, the right in perpetuity, to make, use and show, from time to time and at their discretion, any motion pictures, still pictures and live, taped or film television and other reproductions of him/her during the period of the competition for said event in which the competitor participated and in all material related to the said event without compensation.

## **25. RISK STATEMENT**

- 25.1 RRS 3 states: 'The responsibility for a boat's decision to participate in a race or to continue to race is hers alone.' By participating in this event each competitor agrees and acknowledges that sailing is a potentially dangerous activity with inherent risks. These risks include strong winds and rough seas, sudden changes in weather, failure of equipment, boat handling errors, poor seamanship by other boats, loss of balance on an unstable platform and fatigue resulting in increased risk of injury. **Inherent in the sport of sailing is the risk of permanent, catastrophic injury or death by drowning, trauma, hypothermia or other causes.**
- 25.2 All participants are required to comply with any safety provisions as mandated under the Racing Rules of Sailing and any Class Rules that may apply. The Squadron encourages and supports competitors who believe it is appropriate to exceed the above requirements (such as the wearing of helmets, body armour, impact vests, etc.) if they or their guardian believe that conditions and their personal circumstances warrant. All competitor's attention is drawn to the Risk Statement - Section 25.1 of the Notice of Race.

## **26. INSURANCE**

- 26.1 Each participating boat shall be insured with valid third-party liability insurance with a minimum cover of \$10,000,000AUD per incident or the equivalent.

## **27. PRIZES**

- 27.1. All competitors are eligible for the following awards and must be present on the day of the race to collect:
  - 27.1.1. Monohull – 1st, 2nd, 3rd and 4th over the line
  - 27.1.2. Multihull – 1st and 2nd over the line
  - 27.1.3. Closest to the line at official starting time
  - 27.1.4. A lucky entrance draw (skipper must be present)
  - 27.1.5. Other prizes may be awarded at the discretion of the Race Committee
- 27.2. RQYS Entries only are eligible for the following awards:
  - 27.2.1. Monohull – WAGS Squadron Monohull Champion
  - 27.2.2. Multihull – WAGS Squadron Multihull Champion
- 27.3. THE GEOFF ANDERSON MEMORIAL SUPER SERIES Squadron Championship races are the first Wednesday of each month (December –May) and starting with the Ross Jullyan Memorial Trophy in November.
- 27.4. Due to the nature of Handicapping in WAGS no vessel may win on her first race.

## **28. FURTHER INFORMATION**

- 28.1 For further information please contact:  
RQYS Sailing: 07 3396 8666 / [sailing@rqys.com.au](mailto:sailing@rqys.com.au)  
578 Royal Esplanade MANLY QLD 4179 AUS  
[www.rqys.com.au](http://www.rqys.com.au)

# Attachment A – Manly Harbour 6 knot zone

Description of area	Speed	Ships affected	Date gazetted
(e) All creeks and waterways flowing into the Brisbane River (except the Bremer River)	6 knots	All	
(f) The waters described as: <ul style="list-style-type: none"> <li>commencing at the waterline of the eastern bank nearest to location 27°35.630'S, 152°51.441'E</li> <li>then south along the waterline of the eastern bank upstream to a location on the waterline nearest to 27°35.739'S, 152°51.431'E</li> <li>then west across the river to a point on the waterline of the western bank nearest to location 27°35.739'S, 152°51.338'E</li> <li>then north along the waterline of the western bank to a point on the waterline nearest to 27°35.630'S, 152°51.344'E</li> <li>then easterly across Brisbane River to the point of commencement.</li> </ul>	6 knots	All, excluding ships operated by Maritime Safety Queensland, Queensland Police Service and Queensland Boating and Fisheries Patrol	16 February 2018
<b>Manly Harbour</b> The waters of the Manly Harbour bounded by an imaginary line: <ul style="list-style-type: none"> <li>from a position on the northern breakwater latitude 27°27.042'S, longitude 153°11.520'E</li> <li>then in a north easterly direction to No. 7 starboard lateral beacon latitude 27°26.9523'S, longitude 153°11.7462'E</li> <li>then across the channel to No. 8 port lateral beacon latitude 27°26.9838'S, longitude 153°11.7637'E</li> <li>then continuing in a south westerly direction to a position on the top of the southern breakwater latitude 27°27.112'S, longitude 153°11.545'E</li> <li>then back in a northerly direction across the channel to the initial position at the northern breakwater.</li> </ul> The waters marked in red as shown on Map S8sp-29-1.	6 knots	All	28 October 2022
<b>Moreton Bay</b> The waters of the Tangalooma Wrecks anchorage, Moreton Bay between the wrecks and the western foreshores of Moreton Island.	6 knots	All	21 May 2004
<b>Cabbage Tree Creek</b> Upstream of a line extending approximately south-south-easterly from the jetty known as Baxter's Jetty.	6 knots	All	21 May 2004
<b>Bald Hills Creek</b>	6 knots	8.0m in length & over	21 May 2004
<b>Caboolture River</b>	6 knots	8.0m in length & over	21 May 2004
<b>Pine River</b> North and South Pine Rivers	6 knots	8.0m in length & over	21 May 2004
<b>Tingalpa Creek, Ransome to Capalaba</b> All waters of the Tingalpa Creek extending from Molle Road in position latitude 27° 29.773'S, longitude 153° 11.223'E heading upstream to the Tingalpa Reservoir entrance in position latitude 27° 31.695'S, longitude 153° 10.824'E. The waters marked in red as shown on Map S8sp-26-1.	6 knots	All	28 October 2022
<b>Lake Somerset</b> The waters of Lake Somerset, Brisbane <i>Except</i> The waters of the northern parts of Lake Somerset at approximate latitude 27°00.227's, longitude 152°33.912'e and extending across to the eastern side of Lake Somerset at approximate latitude 27°00.342's, longitude 152°34.356'e.	Unlimited  6 knots	All  All	15 February 2008  6 May 2014
<b>Lake Moogerah</b> The waters of Lake Moogerah, Brisbane <i>Except</i> The southern waters indicated in the below two zones:	Unlimited	All	21 May 2004

This document is uncontrolled when printed or downloaded. Always refer to the on-line version for up-to-date information

# Attachment B – Location Information

## EMERGENCY CONTACTS

---

Emergencies	000	
RQYS Sailing Manager	0424 101 732	
Royal Queensland Yacht Squadron	(07) 3396 8666	578 Royal Esplanade, Manly QLD
Manly Coast Guard	(07) 3396 5911	40 Trafalgar St, Manly QLD
Wynnum Police	(07) 3308 8100	82 Pine St, Wynnum QLD
Wynnum Fire & Rescue	(07) 3396 3297	2006 Wynnum Rd, Wynnum West
Brisbane Water Police	(07) 3895 0333	2 Howard Smith Dr, Port of Brisbane

### Location, access & communication of Next of Kin Details

Sailing Office & SailSys Databases including information gathered from regatta registrations and/or indemnity forms.

### Location of Nearest Emergency Medical Facilities

Redlands Hospital	(07) 3488 3111	21 Weippin St, Cleveland QLD
-------------------	----------------	------------------------------

### Location of Nearest Medical Facilities

Wynnum Family Health Service	(07) 3893 0093	116 Edith St, Wynnum QLD
Doctors on Manly Road	(07) 3348 6111	12 Manly Rd, Manly QLD
Silky Oaks Medical Practice	(07) 3396 9855	218 Manly Rd, Manly QLD
Dental On Cambridge	(07) 3348 6661	4/99 Cambridge Parade, Manly QLD

## LOCAL SERVICES

### Sail Maker

#### North Sails

1/264 Tingal Rd, Wynnum QLD  
3396 5822

#### Hood Sails

181 Wynnum Esplanade, Wynnum QLD  
0419 799 958

#### Ullman Sails

112 Glenora St, Wynnum QLD  
(07) 3348 7245

### Chandlery

#### Muir Marine

453 Esplanade, Manly QLD  
(07) 3396 9988

#### Road Tech Marine

20 Redland Bay Rd, Capalaba QLD  
(07) 3914 9543

### Boat Building / Repairs – Located at RQYS

#### JSA Marine

(07) 3348 5682

#### David Glenn Boat Building

0412 878 144

### Physio

#### Manly Physiotherapy & Pilates

3/443 Esplanade, Manly QLD  
(07) 3396 8137

#### Bounce Physio Birkdale

190 Birkdale Rd, Birkdale QLD  
(07) 3822 2122

### Pharmacy

#### Manly Village Pharmacy

9/222 Stratton Terrace, Manly QLD  
(07) 3396 8999

### Groceries

#### IGA Manly Village

Cnr Stratton Tce & Cambridge Parade  
(07) 3396 1980

#### Woolworths Wynnum Central

145 Florence St, Wynnum QLD  
(07) 3513 4416

### Butcher

#### The Local Butcher

222 Stratton Terrace, Manly QLD  
(07) 3396 2195

### Bakery

#### Manly Bakery

222 Stratton Terrace, Manly QLD  
(07) 3396 5688

### Accommodation

#### [Manly Marine Cover Motel](#)

Located on the Grounds of RQYS  
(07) 3348 1000

#### Limited Camping Facilities at RQYS

[Limited camping MAY be available](#)  
(07) 3396 8666

#### [The Manly Hotel](#)

54 Cambridge Parade, Manly QLD  
(07) 3249 5999

#### [Waterloo Bay Hotel](#)

75 Berrima St, Wynnum QLD  
(07) 3893 2344

#### [Pelican's Nestle Inn](#)

149 Wynnum Esplanade, Wynnum QLD  
(07) 3396 3214

#### [Wynnum Anchor Motel](#)

14 Adam St, Wynnum QLD  
(07) 3396 3037

## LOCAL WEATHER TIDE

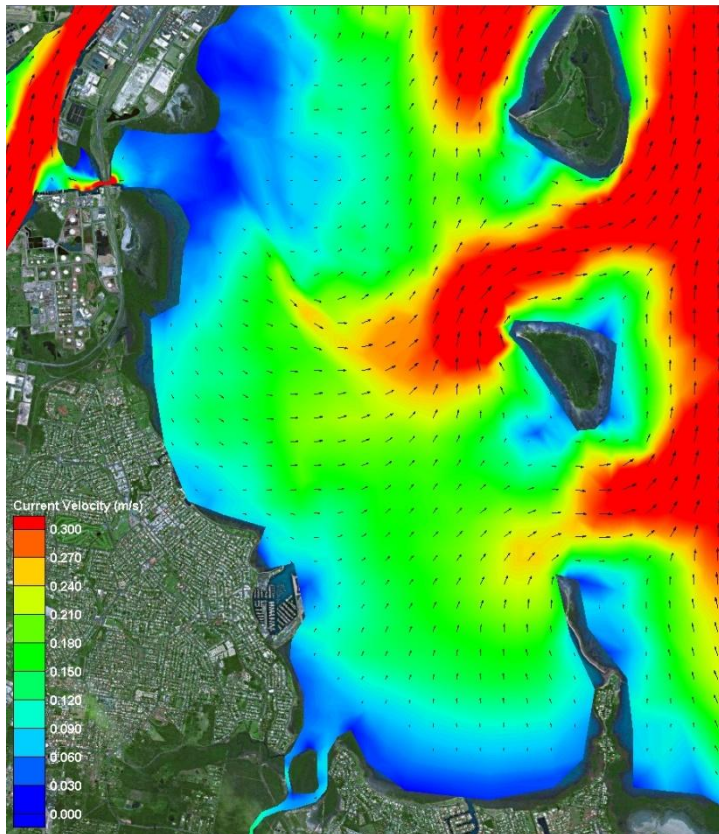
Local Weather: The RQYS Weather Station can be found at:  
<https://www.rqys.com.au/weather-station/>  
The Weather Station records from above the club Bay Lookout.

BOM: Radar: <http://www.bom.gov.au/products/IDR663.loop.shtml>  
Marine Forecast:  
<http://www.bom.gov.au/qld/forecasts/moreton-bay.shtml>

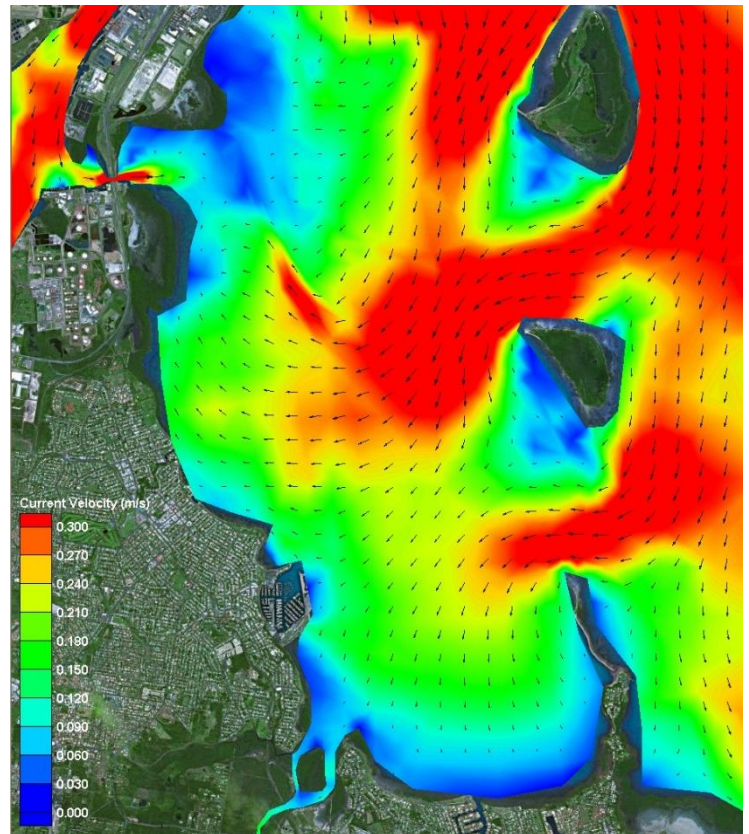
Other Popular forecasts:

Predict Wind: <https://forecast.predictwind.com/table/>  
Seabreeze: <https://www.seabreeze.com.au/weather/wind-forecast/brisbane>  
WillyWeather: <https://wind.willyweather.com.au/qld/brisbane/brisbane.html>

### Waterloo Bay Ebb



### Waterloo Bay Flood



LOCALITY		MAP GRID
578 Royal Esplanade access		A6
Eastern Beach (windsurfing)		P7-P8
Davenport Drive dog off-lead area		N10-P7
Inspiration Point lookout (fishing)		M10
Public (Harbour South) Carpark		A4
Public (South) Boatramp		B4
Public (South) Pontoon		C3

NEARBY MANLY HARBOUR VILLAGE SERVICES  
 900m / 5-15min  
 CONVENIENT RQYS & BAYSIDE MANLY ACCESS  
 Manly Station: 1.5km  
 Brisbane CBD: 30min  
 20min drive

BUILDINGS		MAP GRID
Australian Sailing (QLD)		C8
Bayview Lookout		P6
Boatyard [Former Marina] Office		H5
Cavill Building / FLAGS Room		C5
Clubhouse		C6
Manly Marina Cove Motel (MMCM)		A7 / B8
Marina Office		F5
Monument		K6
Sailing Academy		B5
Sailing Office		D6
Sheds / Storage Lockers		K6, J7- L7
Sports Amenities Block		F5
Trades / Services Sheds		H7
Volunteers' Sheds		D8, J5
Windsurfing Centre of Excellence		P6
Youth Squad Shed		F7

GROUNDS		MAP GRID
Academy (Tackers) Rigging Lawn		B5
DOSA (designated smoking) areas		A6, A7
Kids' / dinghy beach		N5
Rigging Lawn 1 (Main / Functions)		D5
Rigging Lawn 2 (Marina Office)		F6
Rigging Lawn 3 (Youth Squad)		F7
Rigging Lawn 4 (Eastern grounds)		L6, M6
Regatta camping area		M7
Regatta trailer parking area		L6
Slipway 2 (Longer-term storage)		J7-L7
Windsurfing - rigging / hosedown		N7, P6

FACILITIES		MAP GRID
Dock - Bill Kirby (VIP: booking only)		D4
Dock - Fit-out work (short-term)		H4
Dock - Fuel (Diesel & PULP)		D4-E4
Fuel - Bowser (shoreside)		D5
HAZMAT Disposals shed		H5
Ramp 1 - Academy (Tackers)		C4
Ramp 2 - Main (Launch / retrieval)		E5
Ramp 3 - Slipway (Boatyard)		G5
Ramp 4 - Dinghy (Kids' beach)		N5
RQYS Boatyard		G5/6-H5/6
RQYS Sheds / Storage Lockers		K6 / J7-L7
Slipway 2 (longer-term storage)		J7-L7
Travelift (35t) & Slewing Crane		H4/H5

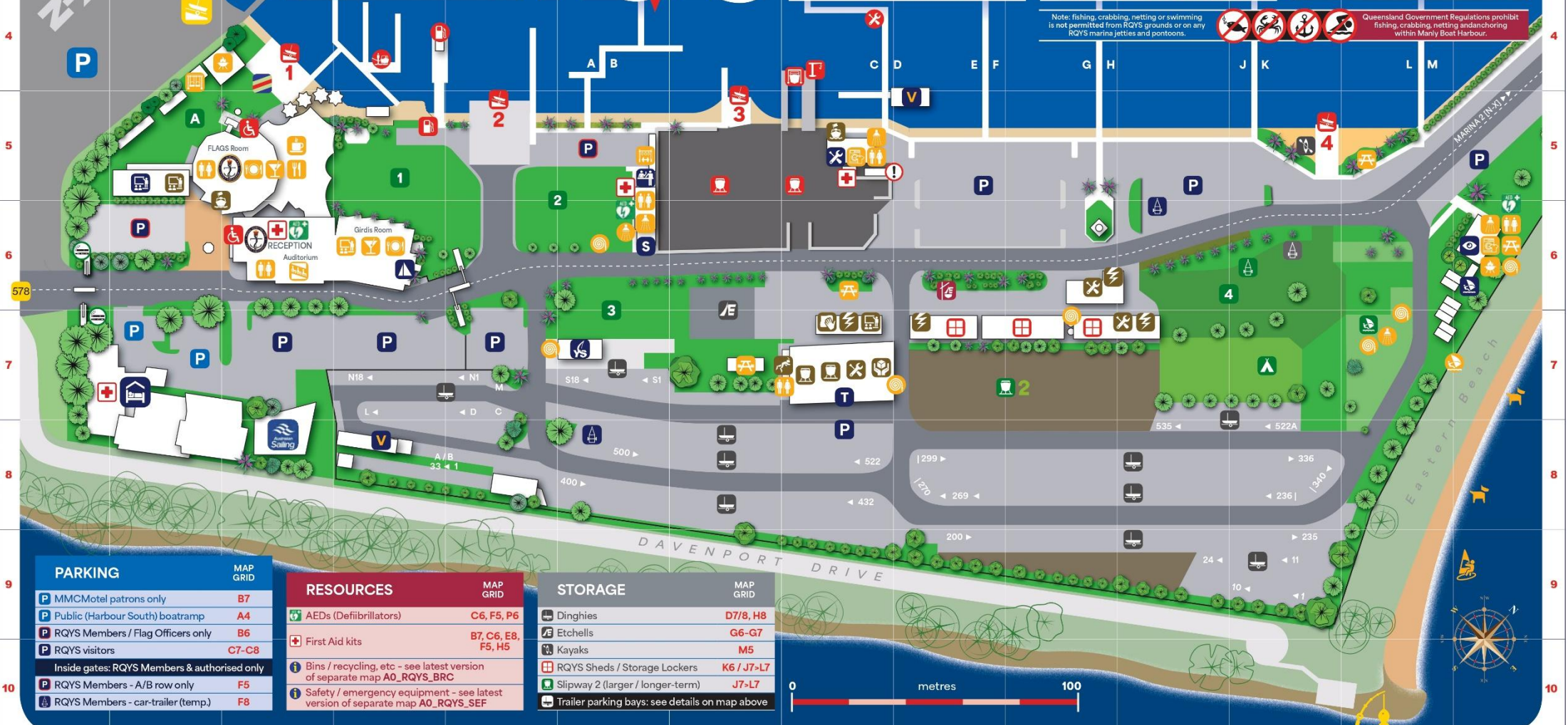
AMENITIES		MAP GRID
BBQs		B4, P6
Beach (RQYS - dinghy / kids')		N5
Beach (windsurfing, dogs, etc)		N10-P7
Gym		F5
Hosedown stations (boats, trailers, vehicles)		E7, F6, K7, M5
Hosedowns (personal / gear)		N7, P6
Kids' play areas		B4, N5
Laundry facilities		H5, P6
Seating / picnic areas		D5, G7, H6, N5, P6
Showers (bathrooms)		F6, H5, P6
Showers (outdoors)		F6, N7
Toilets		C5, C6, F6, H5, H7, P6

BUSINESSES		MAP GRID
Andrew Woodforth Marine		H7
Brisbane Scuba		H7
CMA Mechanical & Marine		K6
David Glenn Boat Builders		H7
Electech Industries		H7
Green Marine Electrical		K6
JSA Marine		H7
Ocean Logic		J7
Paper Sailors Rock		H7
Professional Boat Care		H7
Qld Marine Training Services		B5
Seadog Marine		H7
Signature Yacht Services		L7
SigTech Electrical		L7
World Wide Boat Brokers		B6
Yachtshare		H5

# RQYS DIRECTORY

Note: fishing, crabbing, netting or swimming is not permitted from RQYS grounds or on any RQYS marina jetties and pontoons.

Queensland Government Regulations prohibit fishing, crabbing, netting and anchoring within Manly Boat Harbour.



PARKING		MAP GRID
MMCMotel patrons only		B7
Public (Harbour South) boatramp		A4
RQYS Members / Flag Officers only		B6
RQYS visitors		C7-C8
Inside gates: RQYS Members & authorised only		
RQYS Members - A/B row only		F5
RQYS Members - car-trailer (temp.)		F8

RESOURCES		MAP GRID
AEDs (Defibrillators)		C6, F5, P6
First Aid kits		B7, C6, E8, F5, H5
Bins / recycling, etc - see latest version of separate map A0_RQYS_BRC		
Safety / emergency equipment - see latest version of separate map A0_RQYS_SEF		

STORAGE		MAP GRID
Dinghies		D7/8, H8
Etchells		G6-G7
Kayaks		M5
RQYS Sheds / Storage Lockers		K6 / J7>L7
Slipway 2 (larger / longer-term)		J7>L7
Trailer parking bays: see details on map above		

# ROYAL QUEENSLAND YACHT SQUADRON – THE SAILING GATEWAY TO MORETON BAY

Gold Coast

75km

Brisbane CBD

Sunshine Coast

100km



Waterloo Bay



~ Founded 1885 ~

[rqys.com.au](http://rqys.com.au)

[/RQYS.Manly](https://www.facebook.com/RQYS.Manly) [/royal\\_qld\\_yacht\\_squadron](https://www.instagram.com/royal_qld_yacht_squadron)

